



City of Warrenton City Commission Agenda

City Hall, 225 S. Main Warrenton, OR 97146

Tuesday, September 9, 2025

The meeting will be broadcast via Zoom at the following link

<https://us02web.zoom.us/j/5332386326?pwd=VHNVVXU5blkxbDZ2YmxlSWpha0dhUT09#success>

Meeting ID: 533 238 6326 | Passcode: 12345 | Dial-in Number: 253-215-8782

Public Comment: To provide public comment, participants should register prior to the meeting. All remarks will be addressed to the whole City Commission and limited to 3 minutes per person. The Commission reserves the right to delay any action, if required, until such time as they are fully informed on a matter. Once your public comment is submitted it becomes part of permanent public record.

You may provide public comment using the following methods:

1. In-person: Complete a public comment card and submit to the City Recorder prior to the start of the meeting.
2. Via Zoom: Register with the City Recorder, at cityrecorder@warrentonoregon.us no later than 3pm the day of the meeting. Please ensure that your zoom name matches the name registered to comment.
3. Written comments: Submit via e-mail to the City Recorder, at cityrecorder@warrentonoregon.us, no later than 3:00 p.m. the day of the meeting.

City Commission Regular Meeting 6:00 PM

1. Call to Order

2. Pledge of Allegiance

3. Consent Calendar

- A. City Commission Meeting Minutes 2025.08.26
- B. City Commission Work Session Minutes 2025.08.26

4. Commissioner Reports

5. Public Comment

6. Public Hearings – None

7. Business Items

- A. Consideration of CIP Purchase of Hoist Truck
- B. Consideration of Auction of 2009 Vac-Con Vactor Truck
- C. Consideration of Request for Road Closure – Iredale Culvert Replacement Project Phase 2
- D. Consideration of Change Order No. 2 – Raw Waterline Replacement RP-2 Project; Construction Contract

8. Discussion Items – None

9. Good of the Order

Warrenton City Hall is accessible to the disabled. An interpreter for the hearing impaired may be requested under the terms of ORS 192.630 by contacting Dawne Shaw, City Recorder, at 503-861-0823 at least 48 hours in advance of the meeting so appropriate assistance can be provided.

10. Executive Session

Under the authority of ORS 192.660(2)(e); to conduct deliberations with persons designated by the governing body to conduct real property transactions.

11. Adjournment



City of Warrenton City Commission Minutes

City Hall, 225 S. Main Warrenton, OR 97146

Tuesday, August 26, 2025

1. City Commission meeting called to order at 6:05 pm.
2. Pledge of Allegiance

Commission Members	Present	Excused
Gerald Poe	X	
Jessica Sollaccio	X	
Tom Dyer (via Zoom)	X	
Paul Mitchell	X	
Henry Balensifer, Mayor	X	

Staff Members Present	
City Manager Esther Moberg	City Recorder Dawne Shaw
Police Chief Mathew Workman	Public Works Director Kevin Gorman
Engineering Technician Twyla Vittetoe (via Zoom)	Planning Director Jeff Adams

Mayor Balensifer noted amendments to the agenda; item 7B has been delayed, and 7A removed as it is not a business item. He noted a legal services agreement has been added to the consent calendar and item 8A appointment policy for filling vacant positions. There were no objections.

3. Consent Calendar

*Items on the Consent Calendar have previously been discussed and/or are considered routine.

Approval of the Consent Calendar requires a motion, a second, and no discussion, unless requested by a member of the City Commission.

- A. City Commission Meeting Minutes 2025.08.12
- B. Police Department Monthly Report – June 2025
- C. Dispatch Services Agreement – Police Department
- D. Dispatch Services Agreement – Fire Department
- E. Legal Services Agreement

Motion:	Move to approve the consent calendar as presented.				
Moved:	Poe				
Seconded:	Sollaccio	Aye	Nay	Abstain	Recused
Vote:	Poe	X			
	Sollaccio	X			
	Mitchell	X			
	Dyer	X			

	Balensifer	X			
Passed:	5/0				

4. Commissioner Reports

Commissioner Mitchell discussed the ColPac meeting he attended.

5. Public Comment

Mike Balensifer spoke in regard to the prior work session on fill.

6. Public Hearings – None

7. Business Items

A. Proclamation - Daughters of the American Revolution: Removed from agenda.

B. Presentation - Rural Healthcare: Removed from agenda.

C. Consideration of Ordinance No. 1295:

Police Chief Mathew Workman presented Ordinance No. 1295 for its second reading and adoption. Mayor Balensifer asked for the record how many carts did our unfortunately now gone, but our Code Enforcement Officer pick up through the very short period of time he mentioned; Workman noted he never got the final number. Mayor Balensifer noted for the record, you know I think the currently only opposition to the proposal so far from any retailers about implements is Costco, is that correct Chief; Workman responded. Brief discussion followed.

Motion:	Move to conduct the second reading, by title only, of Ordinance No. 1295.				
Moved:	Poe				
Seconded:	Mitchell	Aye	Nay	Abstain	Recused
Vote:	Poe	X			
	Sollaccio	X			
	Mitchell	X			
	Dyer	X			
	Balensifer	X			
Passed:	5/0				

Mayor Balensifer conducted the second reading, by title only, of Ordinance No. 1295; an Ordinance Adding Chapter 5.16, Shopping Carts to the Warrenton Municipal Code.

Motion:	Move to adopt Ordinance No. 1295.				
Moved:	Sollaccio				
Seconded:	Dyer	Aye	Nay	Abstain	Recused
Vote:	Poe	X			

	Sollaccio	X			
	Mitchell	X			
	Dyer	X			
	Balensifer	X			
Passed:	5/0				

D. Consideration of Resolution No. 2708; Setting a Public Hearing Date for Amending Ordinance No. 1217 – Street Vacation:

Planning Director Jeff Adams reviewed his staff report he noted the resolution is to set the public hearing date to amend Ordinance No. 1217.

Motion:	Move to adopt Resolution No. 2708, setting 6:00 pm, September 23, 2025 as the time and date for a public hearing to consider amending Ordinance No. 1217 for vacating certain streets in the Plat of Warrenton Park and in the Plat of Portsmouth Addition to Warrenton in the City of Warrenton Oregon.				
Moved:	Poe				
Seconded:	Sollaccio	Aye	Nay	Abstain	Recused
Vote:	Poe	X			
	Sollaccio	X			
	Mitchell	X			
	Dyer	X			
	Balensifer	X			
Passed:	5/0				

E. Consideration of Request to Work After Hours – Hammond Transmission Waterline:

Public Works Director Kevin Gorman discussed a request for after hours work on the Hammond transmission waterline project. Discussion followed on the work window and completion timeline. It was noted that major construction is going to be complete by November 7th. Public Works Engineering Technician Twyla Vittetoe noted that substantial completion will be by the November date.

Motion:	Move to approve North Cascade Excavation's request to perform night work from 7:00 pm to 5:00 am, Monday through Thursday, for the Hammond Transmission Main Project between Station 24+00 and Station 51+40, contingent on ODOT's approval of the proposed work hours.				
Moved:	Sollaccio				
Seconded:	Poe	Aye	Nay	Abstain	Recused
Vote:	Poe	X			
	Sollaccio	X			
	Mitchell	X			
	Dyer	X			
	Balensifer	X			

8. Discussion Items

A. Consideration of Commission Vacancy Process:

Mayor Balensifer reviewed his Vacancy and Appoint of Vacant Commission Seat memo he provided. He discussed the vacancy process and the options to fill the seat. Method 1: Once applications close, a one-hour town hall is held during or before the commission meeting for public questions to candidates. The commission then asks follow-up questions, deliberates, and votes on appointments with any desired stipulations. Method 2: Once applications close, the commission meets or interviews candidates, then deliberates and votes on appointments, adding any stipulations as needed. Method 3: The commission votes for whomever it wishes to vote on, with any stipulations to that appointment they wish to add. Brief discussion followed on how appointments were handled in the past. There was consensus for method 1.

9. Good of the Order

Commissioner Mitchell noted community garden ribbon cutting.

Commissioner Sollaccio discussed the seed library. She noted the special guest reading by someone from the governor's office at the library and the CEDR big bash for small businesses.

Commissioner Poe noted he is happy to see fish and game open up wild king salmon fishing for the holiday weekend.

Commissioner Mitchell asked Chief Workman about the passing of items out of vehicles; Workman responded.

Commissioner Dyer thanked staff for assisting him.

Mayor Balensifer stated he attended the garden ribbon cutting. He discussed things happening in the school district. He asked Gorman for an update on potholes; Gorman responded. Discussion followed on ditch cleaning.

Moberg noted the new tsunami siren has been installed but not activated yet, the community garden ribbon cutting, the building and planning remodel, the holiday closure and the police department window upgrade.

10. Executive Session

11. Adjournment

There being no further business, Mayor Balenisfer adjourned the meeting at 6:47 pm.

Respectfully prepared and submitted by Hanna Bentley, Deputy City Recorder.

Approved:

Attest:

Henry A. Balensifer III, Mayor

Dawne Shaw, CMC, City Recorder

DRAFT



City of Warrenton City Commission
Work Session Minutes
 City Hall, 225 S. Main Warrenton, OR 97146
 Tuesday, August 26, 2025

City Commission work session called to order at 5:00 pm.

Commission Members	Present	Excused
Gerald Poe	X	
Jessica Sollaccio	X	
Tom Dyer (via Zoom)	X	
Paul Mitchell	X	
Henry Balensifer, Mayor	X	

Staff Members Present	
City Manager Esther Moberg	City Recorder Dawne Shaw
Public Work Director Kevin Gorman	Planning Director Jeff Adams

City Manager Esther Moberg introduced Paul Sellke of AKS Engineering; he provided a presentation on fill and grading. Discussion followed on fill depth, impacts, enforcement, and fines. Moberg noted the intent is not to go through the ordinance line by line but to encapsulate where they are at and if there is anything they would like to discuss while the engineer is here. It was noted that the ordinance will come back as a discussion item with more information on common elevation, enforcement and penalties.

At 6:01 pm, Mayor Balensifer adjourned the work session.

Respectfully prepared and submitted by Hanna Bentley, Deputy City Recorder.

Approved:

Attest:

 Henry A. Balensifer III, Mayor

 Dawne Shaw, CMC, City Recorder



City Commission Agenda Memo

Meeting Date: September 09, 2025
From: Kevin Gorman, Public Works Director
Subject: CIP Purchase of a Hoist Truck

Summary:

The Public Works Department is requesting authorization to purchase a 2026 Ford F-350 hoist truck from Northside Ford Truck Sales in the amount of \$132,884.36. The new hoist truck will be dedicated to lifting valves, pumps, and other heavy loads necessary for the maintenance and enhancement of the City's utility and infrastructure systems.

Currently, the department relies on outdated equipment or outsourcing to perform hoisting and lifting tasks. This has resulted in operational delays, increased labor hours, and higher outsourcing costs. The absence of dedicated equipment also raises safety concerns for staff and limits the City's response capacity during periods of high demand.

Recommendation/Suggested Motion:

"I move to approve the purchase of a Hoist Truck from Northside Ford in the amount of \$132,884.36"

Alternative:

None recommended

Fiscal Impact:

This purchase is included in the 2025–2026 Fiscal Capital Improvement Program (CIP) Budget.

Attachments:

- Quote from Northside Ford Truck Sales, Inc.,

Approved by City Manager: _____

Prepared for: Rock Haglund

Public Works, City of Warrenton

Prepared by: SHARON TUCKER

07/29/2025

Northside Ford Truck Sales, Inc. | 6221 N E Columbia Blvd. Portland Oregon |

972182995

**2026 F-350 Chassis 4x4 SD Super Cab 168" WB DRW XL (X3H)**

Price Level: 620 | Quote ID: War26X3Hc

As Configured Vehicle

Code	Description	MSRP	Invoice
Base Vehicle			
X3H	Base Vehicle Price (X3H)	\$57,540.00	\$54,663.00
Packages			
640A	Order Code 640A	N/C	N/C
	<i>Includes:</i> - Transmission: TorqShift 10-Speed Automatic Includes SelectShift, selectable drive modes: normal, tow/haul, eco, slippery roads and off-road and transmission power take-off provision. - GVWR: 14,000 lb Payload Package - Tires: LT245/75Rx17E BSW PLUS A/S (6) Spare may not be the same as the road tire. - Wheels: 17" Argent Painted Steel Hub covers/center ornaments not included. - HD Vinyl 40/20/40 Split Bench Seat Includes center armrest, cupholder, storage, 2-way adjustable driver/passenger headrests and driver's side manual lumbar. - Radio: AM/FM Stereo w/MP3 Player Includes 6 speakers. - Ford Connectivity Package (1-Year Included) Includes unlimited Wi-Fi hotspot. Included for 1-year from warranty start date. Requires activation via Ford app with credit card authorization; customer may cancel at any time. Evolving technology/cellular networks/vehicle capability may limit functionality and prevent operation of connected features. Ford may temporarily slow data speeds if such data usage reaches or exceeds 50GB within a billing cycle or due to network limitations. If a customer uses more than 50% of their data usage in a roaming country during a 60-day period, Ford may remove or limit the customer's data plan. - SYNC 4 Communication & Entertainment System Includes enhanced voice recognition, 911 Assist, 8" LCD center stack screen, AppLink and 1 smart-charging USB port.		
Powertrain			
99T	Engine: 6.7L 4V OHV Power Stroke V8 Turbo Diesel B20	\$10,995.00	\$10,006.00
	<i>Includes Operator Commanded Regeneration (OCR), Diesel Exhaust Fluid (DEF) tank and manual push-button engine-exhaust braking.</i> <i>Includes:</i> - Dual 68 AH/65 AGM Battery		
44G	Transmission: TorqShift 10-Speed Automatic	Included	Included
	<i>Includes SelectShift, selectable drive modes: normal, tow/haul, eco, slippery roads and off-road and transmission power take-off provision.</i>		
X4N	Limited Slip w/4.10 Axle Ratio	\$395.00	\$360.00
STDGV	GVWR: 14,000 lb Payload Package	Included	Included

Prices and content availability as shown are subject to change and should be treated as estimates only. Actual base vehicle, package and option pricing may vary from this estimate because of special local pricing, availability or pricing adjustments not reflected in the dealer's computer system. See salesperson for the most current information.

Prepared for: Rock Haglund

Public Works, City of Warrenton

Prepared by: SHARON TUCKER

07/29/2025

Northside Ford Truck Sales, Inc. | 6221 N E Columbia Blvd. Portland Oregon |

972182995

**2026 F-350 Chassis 4x4 SD Super Cab 168" WB DRW XL (X3H)**

Price Level: 620 | Quote ID: War26X3Hc

As Configured Vehicle (cont'd)

Code	Description	MSRP	Invoice
Wheels & Tires			
TD8	Tires: LT245/75R17E BSW PLUS A/S (6) <i>Spare may not be the same as the road tire.</i>	Included	Included
64K	Wheels: 17" Argent Painted Steel <i>Hub covers/center ornaments not included.</i>	Included	Included
Seats & Seat Trim			
A	HD Vinyl 40/20/40 Split Bench Seat <i>Includes center armrest, cupholder, storage, 2-way adjustable driver/passenger headrests and driver's side manual lumbar.</i>	Included	Included
Other Options			
PAINT	Monotone Paint Application	STD	STD
168WB	168" Wheelbase	STD	STD
STDRD	Radio: AM/FM Stereo w/MP3 Player <i>Includes 6 speakers.</i>	Included	Included
	<i>Includes:</i> - Ford Connectivity Package (1-Year Included) <i>Includes unlimited Wi-Fi hotspot. Included for 1-year from warranty start date. Requires activation via Ford app with credit card authorization; customer may cancel at any time. Evolving technology/cellular networks/vehicle capability may limit functionality and prevent operation of connected features. Ford may temporarily slow data speeds if such data usage reaches or exceeds 50GB within a billing cycle or due to network limitations. If a customer uses more than 50% of their data usage in a roaming country during a 60-day period, Ford may remove or limit the customer's data plan.</i> - SYNC 4 Communication & Entertainment System <i>Includes enhanced voice recognition, 911 Assist, 8" LCD center stack screen, AppLink and 1 smart-charging USB port.</i>		
61J	4-Ton Hydraulic Jack	\$55.00	\$50.00
96V	XL Chrome Package <i>Includes:</i> - Chrome Front Bumper - Bright Grille - Privacy Glass w/Power Sliding Rear Glass - Rear Window Defroster - Halogen Fog Lamps	\$325.00	\$296.00
473	Snow Plow Prep Package	\$250.00	\$228.00

Prices and content availability as shown are subject to change and should be treated as estimates only. Actual base vehicle, package and option pricing may vary from this estimate because of special local pricing, availability or pricing adjustments not reflected in the dealer's computer system. See salesperson for the most current information.

Prepared for: Rock Haglund

Public Works, City of Warrenton

Prepared by: SHARON TUCKER

07/29/2025

Northside Ford Truck Sales, Inc. | 6221 N E Columbia Blvd. Portland Oregon |

972182995

**2026 F-350 Chassis 4x4 SD Super Cab 168" WB DRW XL (X3H)**

Price Level: 620 | Quote ID: War26X3Hc

As Configured Vehicle (cont'd)

Code	Description	MSRP	Invoice
	<i>Includes pre-selected springs (see order guide supplemental reference for springs/FGAWR of specific vehicle configurations). Note 1: Restrictions apply; see supplemental reference or body builders layout book for details. Note 2: Also allows for the attachment of a winch. Note 3: Highly recommended to add (86M) dual battery on 7.3L gas engine. Adding (67B) 410 amp dual alternators for diesel engine is highly recommended for max power output.</i>		
41H	Engine Block Heater	\$190.00	\$173.00
41P	Transfer Case Skid Plates	\$100.00	\$91.00
86M	Dual 68 AH/65 AGM Battery	Included	Included
18B	Platform Running Boards	\$445.00	\$405.00
59H	Center High-Mounted Stop Lamp (CHMSL)	\$100.00	\$91.00
872	Rear View Camera & Prep Kit	\$515.00	\$468.00
	<i>Pre-installed content includes cab wiring and frame wiring to the rear most cross member. Upfitters kit includes camera with mounting bracket, 20' jumper wire and camera mounting/aiming instructions.</i>		
52B	Trailer Brake Controller	\$300.00	\$273.00
52S	Interior Work Surface	\$140.00	\$128.00
41A	Rapid-Heat Supplemental Cab Heater	\$350.00	\$319.00
43C	120V/400W Outlet	\$175.00	\$160.00
	<i>Includes 1 in-dash mounted outlet.</i>		
61L	Front Wheel Well Liner (Pre-Installed)	\$180.00	\$164.00

Paint application

T09	4 Key Lockset KTP V2	\$180.00	\$147.00
	Minimum order quantity: 1. Only 2 keys will be programmed by the assembly plant. Dealers and modifiers must reprogram all 4 keys for PATS and RKE on each unit.		

Fleet Options

WARANT	Fleet Customer Powertrain Limited Warranty	N/C	N/C
	Requires valid FIN code.		

Prices and content availability as shown are subject to change and should be treated as estimates only. Actual base vehicle, package and option pricing may vary from this estimate because of special local pricing, availability or pricing adjustments not reflected in the dealer's computer system. See salesperson for the most current information.

Prepared for: Rock Haglund

Public Works, City of Warrenton

Prepared by: SHARON TUCKER

07/29/2025

Northside Ford Truck Sales, Inc. | 6221 N E Columbia Blvd. Portland Oregon |



972182995

2026 F-350 Chassis 4x4 SD Super Cab 168" WB DRW XL (X3H)

Price Level: 620 | Quote ID: War26X3Hc

As Configured Vehicle (cont'd)

Code	Description	MSRP	Invoice
<i>Ford is increasing the 5-year 60,000-mile limited powertrain warranty to 5-years, 100,000 miles. Only Fleet purchasers with a valid Fleet Identification Number (FIN code) will receive the extended warranty. When the sale is entered into the sales reporting system with a sales type fleet along with a valid FIN code, the warranty extension will automatically be added to the vehicle. The extension will stay with the vehicle even if it is subsequently sold to a non-fleet customer before the expiration. This extension applies to both gas and diesel powertrains. Dealers can check for the warranty extension on eligible fleet vehicles in OASIS. Please refer to the Warranty and Policy Manual section 3.13.00 Gas Engine Commercial Warranty. This change will also be reflected in the printed Warranty Guided distributed with the purchase of every new vehicle.</i>			
Emissions			
425	50-State Emissions System	STD	STD
Exterior Color			
Z1_01	Oxford White	N/C	N/C
Interior Color			
AS_03	Medium Dark Slate w/HD Vinyl 40/20/40 Split Bench Seat	N/C	N/C
Upfit Options			
L2042-25	KMS16-09 9' Crane Body	\$64,012.44	\$64,012.44

Prices and content availability as shown are subject to change and should be treated as estimates only. Actual base vehicle, package and option pricing may vary from this estimate because of special local pricing, availability or pricing adjustments not reflected in the dealer's computer system. See salesperson for the most current information.

Prepared for: Rock Haglund

Public Works, City of Warrenton

Prepared by: SHARON TUCKER

07/29/2025



Northside Ford Truck Sales, Inc. | 6221 N E Columbia Blvd. Portland Oregon |

972182995

2026 F-350 Chassis 4x4 SD Super Cab 168" WB DRW XL (X3H)

Price Level: 620 | Quote ID: War26X3Hc

As Configured Vehicle (cont'd)

Code	Description	MSRP	Invoice
	<ul style="list-style-type: none"> -Automotive quality 3-point T-handle latches -14-Gauge Two-Sided A-40 Galvanneal Body Shell -Torsion box floor with no wheel housings in cargo area -(4) Recessed D-ring tie downs -2-1/2" receiver hitch with 18,000 lbs. Maximum Trailer weight and 3,600 lbs. Maximum tongue weight rating -Master lock system -Cab Guard -Light kit with 6-circuit wire harness, stop/turn/tail, back up, marker, RID lights and (4) LED work lights; Ecco 0163T813 - 3,000 Lumen -(2) Aluminum grab handles included -Vise mount stand -Bolt on Slammable tailgate installed -(2) Flex Steps: (1) each side of rear bumper <p>OVERALL LENGTH: ----- 107-1/4" H = 44-3/4" in length x 22-1/2" high OVERALL WIDTH: ----- 94" 2V = 27-1/4" in length x 44" high FLOOR WIDTH: ----- 50" CURBSIDE COMPARTMENTATION: SIDE COMPARTMENT HEIGHT: ----- 44" 1V = 35-1/4" in length x 44" high SIDE COMPARTMENT DEPTH: ----- 22" H = 44-3/4" in length x 22-1/2" high FLOOR HEIGHT: ----- 24" 2V = 27-1/4" in length x 44" high STREETSIDE COMPARTMENTATION: WARRANTY: Standard Knapheide Limited Warranty 1V = 35-1/4" in length x 44" high</p> <p>12" BUMPER WITHOUT THRU Compartment BACK UP ALARM Ecco 510</p> <p>STELLAR EC3200 CRANE -Maximum Horizontal Reach: 15' From CL Of Crane -Maximum Vertical Lift: 16' 2" From Crane Base -Crane Rating: 3,200 ft-lbs -3,200 lbs @ 3'6" / 640 lbs @ 15' -7/32" Rope Diameter -90' Rope Length -410 Degree Power Rotation -12V Power Unit -Radio Remote Control -Aux Battery Installed RRV</p> <p>BOOM SUPPORT Installed</p> <p>2 REAR OUTRIGGERS Manual Jackleg Installed Street Side & Curbside</p> <p>VMAC G30 GAS COMPRESSOR -30 CFM @ 100 PSI (150 PSI Max) -Belt-Driven, 100% Duty Cycle, VMAC Oil-Injected Rotary Screw -Honda GX390 Air Cooled 4-Stroke OHV With Electric Start -2-Speed Throttle, Responds To Air Demand -Key Switch, Choke, Hour Meter -Automatically Idles Down/Up With Air Demand -50'x1/2" Spring Retract Air Hose Reel Installed Right Rear Vertical With Roller Fairlead Out Rear Of Body -FLR System Installed RRV</p> <p>INSTALL OEM BACKUP CAMERA</p> <p>CHASSIS SPRING WORK</p> <p>REAR MUD FLAPS</p> <p>FINISH PAINT Body Exterior Painted Single Stage Color And Interior Compartments Painted White</p> <p>KNAPLINER Commercial Grade Spray-On Bed Liner Applied To Cargo Floor, Sides, Compartment Tops, Bulkhead, Tailgate, Rear Bumper And Entire Front Of Body</p> <p>WEIGHT TICKET</p> <p>7 DRAWER UNIT L1V 5-3"1-5"1-7" With Extreme Duty Drawer Slides, Drawer Liners, & Front To Back Dividers For All 3" & 5" Deep Drawers</p> <p>14 DRAWER BOLT BINS LH</p>		

Prices and content availability as shown are subject to change and should be treated as estimates only. Actual base vehicle, package and option pricing may vary from this estimate because of special local pricing, availability or pricing adjustments not reflected in the dealer's computer system. See salesperson for the most current information.

Prepared for: Rock Haglund

Public Works, City of Warrenton

Prepared by: SHARON TUCKER

07/29/2025



Northside Ford Truck Sales, Inc. | 6221 N E Columbia Blvd. Portland Oregon |

972182995

2026 F-350 Chassis 4x4 SD Super Cab 168" WB DRW XL (X3H)

Price Level: 620 | Quote ID: War26X3Hc

As Configured Vehicle (cont'd)

Code	Description	MSRP	Invoice
	2 ADJUSTABLE SHELF LRV Installed In Street Side Rear Compartment		
	ADJUSTABLE SHELF R1V Installed In Curbside Front Vertical Compartment		
	ADJUSTABLE SHELF RH Installed In Curbside Horizontal Compartment		
	CRANE COMPARTMENT RRV With Roller Fairlead & FLR System		
L2042-25a	LED Compartment Lights	\$828.00	\$828.00
L2042-25b	Front Strobe Kit	\$589.00	\$589.00
	Includes (2) Ecco ED3703A Class I Amber Strobes Installed On Grill		
SUBTOTAL		\$137,664.44	\$133,451.44
Destination Charge		\$2,195.00	\$2,195.00
TOTAL		\$139,859.44	\$135,646.44

Prices and content availability as shown are subject to change and should be treated as estimates only. Actual base vehicle, package and option pricing may vary from this estimate because of special local pricing, availability or pricing adjustments not reflected in the dealer's computer system. See salesperson for the most current information.

Prepared for: Rock Haglund

Public Works, City of Warrenton

Prepared by: SHARON TUCKER

07/29/2025

Northside Ford Truck Sales, Inc. | 6221 N E Columbia Blvd. Portland Oregon |

972182995

**2026 F-350 Chassis 4x4 SD Super Cab 168" WB DRW XL (X3H)**

Price Level: 620 | Quote ID: War26X3Hc

Pricing Summary - Single Vehicle**MSRP****Vehicle Pricing**

Base Vehicle Price	\$57,540.00
Options	\$14,695.00
Colors	\$0.00
Upfitting	\$65,429.44
Fleet Discount	\$0.00
Fuel Charge	\$0.00
Destination Charge	\$2,195.00
Subtotal	\$139,859.44

Pre-Tax Adjustments

Code	Description	MSRP
Delivery	Delivery per contract \$2.50 per mile after 60.	\$107.50
Govt Disc	Government discount	-\$8,473.32
1656	As per state contract #1656	\$0.00
Subtotal		\$131,493.62

Sales Taxes

Code	Description	MSRP
CAT	Corporate Activity Tax	\$525.97

Estimated CAT tax (gross receipts tax) in effect 1/1/20.

Oregon Tax	Oregon Privilege Tax	\$657.47
------------	----------------------	----------

Oregon Privilege Tax for all new vehicles and any used vehicles with less than 7500 miles that have not previously been registered in Oregon.

Subtotal	\$132,677.06
-----------------	---------------------

Prices and content availability as shown are subject to change and should be treated as estimates only. Actual base vehicle, package and option pricing may vary from this estimate because of special local pricing, availability or pricing adjustments not reflected in the dealer's computer system. See salesperson for the most current information.

Prepared for: Rock Haglund

Public Works, City of Warrenton

Prepared by: SHARON TUCKER

07/29/2025

Northside Ford Truck Sales, Inc. | 6221 N E Columbia Blvd. Portland Oregon |



972182995

2026 F-350 Chassis 4x4 SD Super Cab 168" WB DRW XL (X3H)

Price Level: 620 | Quote ID: War26X3Hc

Pricing Summary - Single Vehicle

Post-Tax Adjustments

Code	Description	MSRP
CAT Doc 75	Adjustment for CAT on \$75 Doc fee	\$0.30
<i>CAT tax adjustment for doc fee. Tax is to be collected for document processing fee.</i>		
E-Doc	Doc fee for E-Plates	\$75.00
<i>Doc fee for processing E-Plates</i>		
E-RegPlate	Plate and registration for E-Plates	\$31.00
<i>E plate and registration</i>		
Title-19	Title fee for vehicles getting 0-19 MPG avg	\$101.00
Subtotal		\$132,884.36
Total		\$132,884.36

Customer Signature_____
Acceptance Date

Prices and content availability as shown are subject to change and should be treated as estimates only. Actual base vehicle, package and option pricing may vary from this estimate because of special local pricing, availability or pricing adjustments not reflected in the dealer's computer system. See salesperson for the most current information.

Prepared for: Rock Haglund

Public Works, City of Warrenton

Prepared by: SHARON TUCKER

07/29/2025

Northside Ford Truck Sales, Inc. | 6221 N E Columbia Blvd. Portland Oregon |

972182995

**2026 F-350 Chassis 4x4 SD Super Cab 168" WB DRW XL (X3H)**

Price Level: 620 | Quote ID: War26X3Hc

Available Options

Selected	Code	Description	MSRP	Invoice
Packages				
<input checked="" type="checkbox"/>	640A	Order Code 640A	N/C	N/C
<i>Includes:</i>				
- Engine: 7.3L 2V DEVCT NA PFI V8 Gas				
- 190 Amp Alternator				
- Transmission: TorqShift 10-Speed Automatic				
Includes SelectShift, selectable drive modes: normal, tow/haul, eco, slippery roads and off-road and transmission power take-off provision.				
- 3.73 Axle Ratio				
- GVWR: 14,000 lb Payload Package				
- Tires: LT245/75Rx17E BSW PLUS A/S (6)				
Spare may not be the same as the road tire.				
- Wheels: 17" Argent Painted Steel				
Hub covers/center ornaments not included.				
- HD Vinyl 40/20/40 Split Bench Seat				
Includes center armrest, cupholder, storage, 2-way adjustable driver/passenger headrests and driver's side manual lumbar.				
- Radio: AM/FM Stereo w/MP3 Player				
Includes 6 speakers.				
- Ford Connectivity Package (1-Year Included)				
Includes unlimited Wi-Fi hotspot. Included for 1-year from warranty start date. Requires activation via Ford app with credit card authorization; customer may cancel at any time. Evolving technology/cellular networks/vehicle capability may limit functionality and prevent operation of connected features. Ford may temporarily slow data speeds if such data usage reaches or exceeds 50GB within a billing cycle or due to network limitations. If a customer uses more than 50% of their data usage in a roaming country during a 60-day period, Ford may remove or limit the customer's data plan.				
- SYNC 4 Communication & Entertainment System				
Includes enhanced voice recognition, 911 Assist, 8" LCD center stack screen, AppLink and 1 smart-charging USB port.				
Powertrain				
<input type="checkbox"/>	99N	Engine: 7.3L 2V DEVCT NA PFI V8 Gas	STD	STD
<i>Includes:</i>				
- 190 Amp Alternator				
<input checked="" type="checkbox"/>	99T	Engine: 6.7L 4V OHV Power Stroke V8 Turbo Diesel B20	\$10,995.00	\$10,006.00
Includes Operator Commanded Regeneration (OCR), Diesel Exhaust Fluid (DEF) tank and manual push-button engine-exhaust braking.				
<i>Includes:</i>				
- Dual 68 AH/65 AGM Battery				
- 250 Amp Alternator				
<input checked="" type="checkbox"/>	44G	Transmission: TorqShift 10- Speed Automatic	STD	STD
Includes SelectShift, selectable drive modes: normal, tow/haul, eco, slippery roads and off-road and transmission power take-off provision.				

Prices and content availability as shown are subject to change and should be treated as estimates only. Actual base vehicle, package and option pricing may vary from this estimate because of special local pricing, availability or pricing adjustments not reflected in the dealer's computer system. See salesperson for the most current information.

Prepared for: Rock Haglund

Public Works, City of Warrenton

Prepared by: SHARON TUCKER

07/29/2025



Northside Ford Truck Sales, Inc. | 6221 N E Columbia Blvd. Portland Oregon |

972182995

2026 F-350 Chassis 4x4 SD Super Cab 168" WB DRW XL (X3H)

Price Level: 620 | Quote ID: War26X3Hc

Available Options (cont'd)

Selected	Code	Description	MSRP	Invoice
<input type="checkbox"/>	X37	3.73 Axle Ratio	STD	STD
<input checked="" type="checkbox"/>	X4N	Limited Slip w/4.10 Axle Ratio	\$395.00	\$360.00
<input type="checkbox"/>	X4L	Limited Slip w/4.30 Axle Ratio	\$385.00	\$351.00
<input checked="" type="checkbox"/>	STDGV	GVWR: 14,000 lb Payload Package	STD	STD

Wheels & Tires

<input checked="" type="checkbox"/>	TD8	Tires: LT245/75Rx17E BSW PLUS A/S (6) <i>Spare may not be the same as the road tire.</i>	STD	STD
<input type="checkbox"/>	TBM	Tires: LT245/75Rx17E BSW A/T <i>Spare may not be the same as road tire.</i>	\$165.00	\$150.00
<input checked="" type="checkbox"/>	64K	Wheels: 17" Argent Painted Steel <i>Hub covers/center ornaments not included.</i>	STD	STD
<input type="checkbox"/>	64J	Wheels: 17" Forged Polished Aluminum <i>Includes bright hub covers/center ornaments (4 aluminum outer and 2 steel inner).</i>	\$600.00	\$546.00
<input type="checkbox"/>	512	Spare Tire & Wheel Required in Rhode Island. <i>Excludes carrier.</i> <i>Includes:</i> <i>- 4-Ton Hydraulic Jack</i>	\$350.00	\$319.00
<input type="checkbox"/>	51D	Spare Tire & Wheel Delete (Regional) Only available to pool accounts for sales to Rhode Island.	-\$85.00	-\$78.00

Prices and content availability as shown are subject to change and should be treated as estimates only. Actual base vehicle, package and option pricing may vary from this estimate because of special local pricing, availability or pricing adjustments not reflected in the dealer's computer system. See salesperson for the most current information.

Prepared for: Rock Haglund

Public Works, City of Warrenton

Prepared by: SHARON TUCKER

07/29/2025



Northside Ford Truck Sales, Inc. | 6221 N E Columbia Blvd. Portland Oregon |

972182995

2026 F-350 Chassis 4x4 SD Super Cab 168" WB DRW XL (X3H)

Price Level: 620 | Quote ID: War26X3Hc

Available Options (cont'd)

Selected	Code	Description	MSRP	Invoice
<input type="checkbox"/>	945	Stainless Steel Wheel Covers (Pre-Installed) <i>Front and rear.</i>	\$480.00	\$437.00

Seats & Seat Trim

<input checked="" type="checkbox"/>	A	HD Vinyl 40/20/40 Split Bench Seat <i>Includes center armrest, cupholder, storage, 2-way adjustable driver/passenger headrests and driver's side manual lumbar.</i>	STD	STD
<input type="checkbox"/>	1	Cloth 40/20/40 Split Bench Seat <i>Includes center armrest, cupholder, storage and driver's side manual lumbar.</i>	\$100.00	\$91.00
<input type="checkbox"/>	L	Vinyl 40/Mini-Console/40 Front Seat <i>Includes driver's side manual lumbar.</i>	\$355.00	\$323.00
<input type="checkbox"/>	4	Cloth 40/Mini-Console/40 Front Seat <i>Includes driver's side manual lumbar.</i>	\$515.00	\$468.00

Other Options

<input checked="" type="checkbox"/>	PAINT	Monotone Paint Application	STD	STD
<input checked="" type="checkbox"/>	168WB	168" Wheelbase	STD	STD
<input checked="" type="checkbox"/>	STDRD	Radio: AM/FM Stereo w/MP3 Player <i>Includes 6 speakers. Includes: - Ford Connectivity Package (1-Year Included) Includes unlimited Wi-Fi hotspot. Included for 1-year from warranty start date. Requires activation via Ford app with credit card authorization; customer may cancel at any time. Evolving technology/cellular networks/vehicle capability may limit functionality and prevent operation of connected features. Ford may temporarily slow data speeds if such data usage reaches or exceeds 50GB within a billing cycle or due to network limitations. If a customer uses more than 50% of their data usage in a roaming country during a 60-day period, Ford may remove or limit the customer's data plan. - SYNC 4 Communication & Entertainment System Includes enhanced voice recognition, 911 Assist, 8" LCD center stack screen, AppLink and 1 smart-charging USB port.</i>	STD	STD

Prices and content availability as shown are subject to change and should be treated as estimates only. Actual base vehicle, package and option pricing may vary from this estimate because of special local pricing, availability or pricing adjustments not reflected in the dealer's computer system. See salesperson for the most current information.

Prepared for: Rock Haglund

Public Works, City of Warrenton

Prepared by: SHARON TUCKER

07/29/2025

Northside Ford Truck Sales, Inc. | 6221 N E Columbia Blvd. Portland Oregon |

972182995

**2026 F-350 Chassis 4x4 SD Super Cab 168" WB DRW XL (X3H)**

Price Level: 620 | Quote ID: War26X3Hc

Available Options (cont'd)

Selected	Code	Description	MSRP	Invoice
<input checked="" type="checkbox"/>	61J	4-Ton Hydraulic Jack	\$55.00	\$50.00
<input type="checkbox"/>	61J_	4-Ton Hydraulic Jack (Regional) Standard in Rhode Island.	N/C	N/C
<input checked="" type="checkbox"/>	96V	XL Chrome Package <i>Includes:</i> - Chrome Front Bumper - Bright Grille - Privacy Glass w/Power Sliding Rear Glass - Rear Window Defroster - Remote Start - Halogen Fog Lamps	\$325.00	\$296.00
<input type="checkbox"/>	94D	Ford Connectivity Pack (One- Time Purchase - 7 Yrs) <i>Includes unlimited Wi-Fi hotspot. Select option for a one-time purchase of Ford connectivity package. Ford connectivity package will be active for 7 years on this vehicle (non-transferrable to another VIN) from warranty start date. Requires activation via Ford app. Evolving technology/cellular networks/vehicle capability may limit functionality and prevent operation of connected features. Ford may temporarily slow data speeds if such data usage reaches or exceeds 50GB within a billing cycle or due to network limitations. If a customer uses more than 50% of their data usage in a roaming country during a 60-day period, Ford may remove or limit the customer's data plan.</i>	\$745.00	\$745.00
<input type="checkbox"/>	67H	Heavy-Service Front Suspension Package <i>Includes pre-selected heavy-service front springs (see Order Guide Supplemental Reference for springs/FGAWR of specific vehicle configurations). Recommended only on vehicles which will permanently utilize aftermarket equipment such as heavy-duty winches, brush guards or other apparatus which loads the front axle to the specified Gross Axle Weight Rating (GAWR). Note 1: May result in a deterioration of ride quality. Note 2: Vehicle ride height will increase with the addition of this package.</i>	\$125.00	\$114.00
<input type="checkbox"/>	67X	Extra Heavy-Service Suspension Package <i>Includes pre-selected extra heavy-service front springs (see Order Guide Supplemental Reference for springs/FGAWR of specific vehicle configurations). Recommended only on vehicles which will permanently utilize aftermarket equipment such as heavy-duty winches, brush guards or other apparatus which loads the front axle to the specified Gross Axle Weight Rating (GAWR). Note 1: May result in a deterioration of ride quality. Note 2: Vehicle ride height will increase with the addition of this package.</i>	\$125.00	\$114.00
<input checked="" type="checkbox"/>	473	Snow Plow Prep Package <i>Includes pre-selected springs (see order guide supplemental reference for springs/FGAWR of specific vehicle configurations). Note 1: Restrictions apply; see supplemental reference or body builders layout book for details. Note 2: Also allows for the attachment of a winch. Note 3: Highly recommended to add (86M) dual battery on 7.3L gas engine. Adding (67B) 410 amp dual alternators for diesel engine is highly recommended for max power output.</i>	\$250.00	\$228.00

Prices and content availability as shown are subject to change and should be treated as estimates only. Actual base vehicle, package and option pricing may vary from this estimate because of special local pricing, availability or pricing adjustments not reflected in the dealer's computer system. See salesperson for the most current information.

Prepared for: Rock Haglund

Public Works, City of Warrenton

Prepared by: SHARON TUCKER

07/29/2025

Northside Ford Truck Sales, Inc. | 6221 N E Columbia Blvd. Portland Oregon |

972182995

**2026 F-350 Chassis 4x4 SD Super Cab 168" WB DRW XL (X3H)**

Price Level: 620 | Quote ID: War26X3Hc

Available Options (cont'd)

Selected	Code	Description	MSRP	Invoice
<input checked="" type="checkbox"/>	41H	Engine Block Heater	\$190.00	\$173.00
<input type="checkbox"/>	86K	Programmable Engine Idle Shutdown Timer	\$250.00	\$228.00
<i>Selection of this option enables the driver to select a time period between 1 to 30 minutes before the engine will shut off after idling. There will not be an option to override this timing. Customers needing to idle their vehicles for longer periods should not select this option.</i>				
<input checked="" type="checkbox"/>	41P	Transfer Case Skid Plates	\$100.00	\$91.00
<input type="checkbox"/>	60X	Automated Emergency Braking (AEB) Removal	N/C	N/C
<i>Removes Pre-Collision Assist with Automated Emergency Braking (AEB) and forward collision warning, auto high beams, post impact braking and audible lane departure warning.</i>				
<input type="checkbox"/>	43K	Pro Power Onboard - 2kW	\$985.00	\$897.00
<i>Includes dual alternators 12V 250 Amp + 24V 150 Amp. Placement and connection of the aux outlet is the responsibility of the final stage manufacturer.</i>				
<input checked="" type="checkbox"/>	86M	Dual 68 AH/65 AGM Battery	\$210.00	\$191.00
<input type="checkbox"/>	18A	Vehicle Integration System 2.0	\$400.00	\$364.00
<i>FIN code required to program the module.</i>				
<i>Includes programmable vehicle integration system. Recommended for trucks that will utilize upfit aftermarket equipment.</i>				
<input type="checkbox"/>	67E	250 Amp Alternator	N/C	N/C
<input type="checkbox"/>	67A	350 Amp Dual Alternators	N/C	N/C
<i>Includes 190 Amp + 160 Amp.</i>				
<input type="checkbox"/>	67B	410 Amp Dual Alternators	\$115.00	\$104.00
<i>Includes 250 Amp + 160 Amp.</i>				
<input type="checkbox"/>	65M	26.5 Gallon Mid Ship Fuel Tank	\$125.00	\$114.00
<i>Removes 40 gallon fuel tank.</i>				
<input type="checkbox"/>	65C	Dual Diesel Fuel Tanks	\$625.00	\$569.00

Prices and content availability as shown are subject to change and should be treated as estimates only. Actual base vehicle, package and option pricing may vary from this estimate because of special local pricing, availability or pricing adjustments not reflected in the dealer's computer system. See salesperson for the most current information.

Prepared for: Rock Haglund

Public Works, City of Warrenton

Prepared by: SHARON TUCKER

07/29/2025



Northside Ford Truck Sales, Inc. | 6221 N E Columbia Blvd. Portland Oregon |

972182995

2026 F-350 Chassis 4x4 SD Super Cab 168" WB DRW XL (X3H)

Price Level: 620 | Quote ID: War26X3Hc

Available Options (cont'd)

Selected	Code	Description	MSRP	Invoice
<i>Combines 40 gallon aft-of-axle and 26.5 gallon mid ship tank.</i>				
<input checked="" type="checkbox"/>	18B	Platform Running Boards	\$445.00	\$405.00
<input checked="" type="checkbox"/>	59H	Center High-Mounted Stop Lamp (CHMSL)	\$100.00	\$91.00
<input type="checkbox"/>	153	Front License Plate Bracket	N/C	N/C
Standard in states requiring 2 license plates and optional to all others.				
<input checked="" type="checkbox"/>	872	Rear View Camera & Prep Kit	\$515.00	\$468.00
<i>Pre-installed content includes cab wiring and frame wiring to the rear most cross member. Upfitters kit includes camera with mounting bracket, 20' jumper wire and camera mounting/aiming instructions.</i>				
<input checked="" type="checkbox"/>	52B	Trailer Brake Controller	\$300.00	\$273.00
<input checked="" type="checkbox"/>	52S	Interior Work Surface	\$140.00	\$128.00
<input checked="" type="checkbox"/>	41A	Rapid-Heat Supplemental Cab Heater	\$350.00	\$319.00
<i>Includes: - 410 Amp Dual Alternators Includes 250 Amp + 160 Amp.</i>				
<input checked="" type="checkbox"/>	43C	120V/400W Outlet	\$175.00	\$160.00
<i>Includes 1 in-dash mounted outlet.</i>				
<input type="checkbox"/>	76C	Exterior Backup Alarm (Pre-Installed)	\$230.00	\$210.00
<input type="checkbox"/>	91S	Amber 360-Degree Dual Beacon LED Warning Strobes	\$660.00	\$600.00
<i>Pre-installed.</i>				
<input type="checkbox"/>	91G	Amber-Wht 360-Deg Dual Beacon LED Warning Strobes	\$660.00	\$600.00
<i>Pre-installed.</i>				

Prices and content availability as shown are subject to change and should be treated as estimates only. Actual base vehicle, package and option pricing may vary from this estimate because of special local pricing, availability or pricing adjustments not reflected in the dealer's computer system. See salesperson for the most current information.

Prepared for: Rock Haglund

Public Works, City of Warrenton
Prepared by: SHARON TUCKER
07/29/2025



Northside Ford Truck Sales, Inc. | 6221 N E Columbia Blvd. Portland Oregon |
972182995

2026 F-350 Chassis 4x4 SD Super Cab 168" WB DRW XL (X3H)

Price Level: 620 | Quote ID: War26X3Hc

Available Options (cont'd)

Selected	Code	Description	MSRP	Invoice
<input checked="" type="checkbox"/>	61L	Front Wheel Well Liner (Pre-Installed)	\$180.00	\$164.00
<input type="checkbox"/>	79V	COV Required	N/A	N/A
<input type="checkbox"/>	C09	Priced DORA	N/C	N/C

Dealer Installed Options

<input type="checkbox"/>	FI4AD	SecuriCode Wireless Keyless Entry Keypad <i>Driver's side. Shipped separately from the vehicle for dealer installation.</i>	\$230.00	\$210.00
<input type="checkbox"/>	AFFAB	Battery Jump Start System GB70 by NOCO w/Case <i>Shipped separately from the vehicle for dealer installation.</i>	\$310.00	\$282.00
<input type="checkbox"/>	BBVAF	Windshield Sunshade by Covercraft <i>Shipped separately from the vehicle for dealer installation.</i>	\$130.00	\$119.00
<input type="checkbox"/>	AH1AB	Super Duty Tool Kit by AllTrade <i>Shipped separately from the vehicle for dealer installation.</i>	\$520.00	\$473.00
<input type="checkbox"/>	B1HAB	Illuminated Front Emblem <i>Shipped separately from the vehicle for dealer installation.</i>	\$480.00	\$437.00
<input type="checkbox"/>	IDGAB	Kicker Subwoofer <i>Shipped separately from the vehicle for dealer installation.</i>	\$1,010.00	\$919.00
<input type="checkbox"/>	AILDS	Smoke Side Window Deflector Kit (Set of 4) <i>Low profile by Lund. Shipped separately from the vehicle for dealer installation.</i>	\$160.00	\$145.00
<input type="checkbox"/>	AHQAB	First Aid Kit w/Ford Logo <i>Shipped separately from the vehicle for dealer installation.</i>	\$60.00	\$54.00

Prices and content availability as shown are subject to change and should be treated as estimates only. Actual base vehicle, package and option pricing may vary from this estimate because of special local pricing, availability or pricing adjustments not reflected in the dealer's computer system. See salesperson for the most current information.

Prepared for: Rock Haglund

Public Works, City of Warrenton

Prepared by: SHARON TUCKER

07/29/2025



Northside Ford Truck Sales, Inc. | 6221 N E Columbia Blvd. Portland Oregon |

972182995

2026 F-350 Chassis 4x4 SD Super Cab 168" WB DRW XL (X3H)

Price Level: 620 | Quote ID: War26X3Hc

Available Options (cont'd)

Selected	Code	Description	MSRP	Invoice
<input type="checkbox"/>	AHMAB	Roadside Assistance Kit w/Ford Logo <i>Shipped separately from the vehicle for dealer installation.</i>	\$80.00	\$73.00
<input type="checkbox"/>	AHMAC	Commercial USA Roadside Assistance Kit <i>Shipped separately from the vehicle for dealer installation.</i>	\$240.00	\$219.00

VSO Options

<input type="checkbox"/>	T08	4 Key Lockset KTP V1 Minimum order quantity: 1. Only 2 keys will be programmed by the assembly plant. Dealers and modifiers must reprogram all 4 keys for PATS and RKE on each unit.	\$180.00	\$147.00
<input checked="" type="checkbox"/>	T09	4 Key Lockset KTP V2 Minimum order quantity: 1. Only 2 keys will be programmed by the assembly plant. Dealers and modifiers must reprogram all 4 keys for PATS and RKE on each unit.	\$180.00	\$147.00
<input type="checkbox"/>	T0B	4 Key Lockset KTP V4 Minimum order quantity: 1. Only 2 keys will be programmed by the assembly plant. Dealers and modifiers must reprogram all 4 keys for PATS and RKE on each unit.	\$180.00	\$147.00

Fleet Options

<input type="checkbox"/>	47A	Ambulance Prep Package (LPO) Requires valid FIN code. <i>Includes 5,250 to 5,990 lbs front springs/front GAWR rating, see Supplemental Order Guide for complete details. Incomplete vehicle package - requires further manufacture and certification by a final stage manufacturer. Ford vehicles are suitable for producing ambulances only if equipped with the Ford Ambulance Prep Package. In addition, Ford urges ambulance manufacturers to follow the recommendations of the Ford incomplete vehicle manual and the Ford Truck Body Builders layout book (and pertinent supplements). Using a Ford vehicle without the Ford ambulance prep package to produce an ambulance voids the Ford warranty. Note: Stationary Elevated Idle Control (SEIC) has been integrated into the engine control module.</i> <i>Includes:</i> - 410 Amp Dual Alternators Includes 250 Amp + 160 Amp. - Dual 68 AH/65 AGM Battery	\$1,205.00	\$1,096.00
--------------------------	-----	--	------------	------------

Prices and content availability as shown are subject to change and should be treated as estimates only. Actual base vehicle, package and option pricing may vary from this estimate because of special local pricing, availability or pricing adjustments not reflected in the dealer's computer system. See salesperson for the most current information.

Prepared for: Rock Haglund

Public Works, City of Warrenton

Prepared by: SHARON TUCKER

07/29/2025

Northside Ford Truck Sales, Inc. | 6221 N E Columbia Blvd. Portland Oregon |

972182995

**2026 F-350 Chassis 4x4 SD Super Cab 168" WB DRW XL (X3H)**

Price Level: 620 | Quote ID: War26X3Hc

Available Options (cont'd)

Selected	Code	Description	MSRP	Invoice
<input type="checkbox"/>	47L	Ambulance Prep Pkg w/Special Emissions (LPO)	\$1,205.00	\$1,096.00
Requires valid FIN code.				
Includes 5,250 to 5,990 lbs max front springs/front GAWR, see Supplemental Order Guide for complete details. Incomplete vehicle package - requires further manufacture and certification by a final stage manufacturer. Ford vehicles are suitable for producing ambulances with special emissions only if equipped with the Ford ambulance prep package with EPA special emergency vehicle emissions. In addition, Ford urges ambulance manufacturers to follow the recommendations of the Ford incomplete vehicle manual and the Ford Truck Body Builders Layout Book (and pertinent supplements). Using a Ford vehicle without the Ford ambulance package with EPA special emergency vehicle emissions to produce an ambulance with special emissions voids the Ford warranty. Note 1: Stationary Elevated Idle Control (SEIC) has been integrated into the engine control module. Note 2: Engine calibration significantly reduces the possibility of depower mode when in stationary PTO operation. Note 3: Must meet the definition of an Emergency Vehicle, an Ambulance or Fire Truck per 40 CFR 86.1803.01 in the Federal Register. Note 4: California code of regulations allows for the sale of federally certified emergency vehicles in California.				
Includes:				
- 410 Amp Dual Alternators				
Includes 250 Amp + 160 Amp.				
- Limited Slip w/4.10 Axle Ratio (LPO) (Fleet)				
Wide track.				
- Dual 68 AH/65 AGM Battery				
<input type="checkbox"/>	47J	Fire/Rescue Prep Pkg w/EPA Special Emissions (LPO)	\$1,205.00	\$1,096.00
Requires valid FIN code.				
Includes upgraded front springs/GAWR rating, please see Supplemental Order Guide or visit fordabas.com for complete details. Incomplete vehicle package - requires further manufacture and certification by a final stage manufacturer. Ford urges Fire/Rescue vehicle manufacturers to follow the recommendations of the Ford Incomplete Vehicle Manual and the Ford Truck Body Builders Layout Book (and pertinent supplements). Note 1: Stationary Elevated Idle Control (SEIC) has been integrated into the engine control module. Note 2: Engine calibration significantly reduces the possibility of depower mode when in stationary PTO operation. Note 3: Must meet the definition of an emergency vehicle, an Ambulance or Fire Truck per 40 CFR 86.1803.01 in the federal register. Note 4: California Code of Regulations allows for the sale of federally certified emergency vehicles in California.				
Includes:				
- 410 Amp Dual Alternators				
Includes 250 Amp + 160 Amp.				
<input type="checkbox"/>	927	Speed Limitation - 75-MPH Governed Top Speed (LPO)	\$80.00	\$73.00
Requires valid FIN code.				
<input type="checkbox"/>	D9E	Built: Kentucky Truck Plant	N/C	N/C
<input type="checkbox"/>	D9D	Built: Ohio Plant	N/C	N/C
<input type="checkbox"/>	31K	Ship-Thru: Adrian Steel	\$0.00	\$706.00

Prices and content availability as shown are subject to change and should be treated as estimates only. Actual base vehicle, package and option pricing may vary from this estimate because of special local pricing, availability or pricing adjustments not reflected in the dealer's computer system. See salesperson for the most current information.

Prepared for: Rock Haglund

Public Works, City of Warrenton

Prepared by: SHARON TUCKER

07/29/2025



Northside Ford Truck Sales, Inc. | 6221 N E Columbia Blvd. Portland Oregon |

972182995

2026 F-350 Chassis 4x4 SD Super Cab 168" WB DRW XL (X3H)

Price Level: 620 | Quote ID: War26X3Hc

Available Options (cont'd)

Selected	Code	Description	MSRP	Invoice
<input type="checkbox"/>	315	Ship-Thru: Alt Fuel Innovations, LLC (AFI)	\$0.00	\$825.00
<input type="checkbox"/>	31A	Ship-Thru: Altec	\$0.00	\$150.00
<input type="checkbox"/>	31T	Ship-Thru: Bobs Services LLC	\$0.00	\$420.00
<input type="checkbox"/>	311	Ship-Thru: Dejana	\$0.00	\$825.00
<input type="checkbox"/>	31U	Ship-Thru: General Truck Body	Variable	Variable
<input type="checkbox"/>	31L	Ship-Thru: Holman	\$0.00	\$150.00
<input type="checkbox"/>	319	Ship-Thru: KC Truck Systems Inc.	\$0.00	\$825.00
<input type="checkbox"/>	31W	Ship-Thru: Knapheide - IN	N/C	N/C
<input type="checkbox"/>	31V	Ship-Thru: Knapheide Truck Equipment	\$0.00	\$825.00
<input type="checkbox"/>	31M	Ship-Thru: Manning Truck Equipment	\$0.00	\$150.00
<input type="checkbox"/>	31N	Ship-Thru: Monroe Truck Equipment	Variable	Variable
<input type="checkbox"/>	31O	Ship-Thru: National Fleet Services	\$0.00	\$676.00
<input type="checkbox"/>	31G	Ship-Thru: NBC Truck Equipment	Variable	Variable

Prices and content availability as shown are subject to change and should be treated as estimates only. Actual base vehicle, package and option pricing may vary from this estimate because of special local pricing, availability or pricing adjustments not reflected in the dealer's computer system. See salesperson for the most current information.

Prepared for: Rock Haglund

Public Works, City of Warrenton

Prepared by: SHARON TUCKER

07/29/2025

Northside Ford Truck Sales, Inc. | 6221 N E Columbia Blvd. Portland Oregon |

972182995

**2026 F-350 Chassis 4x4 SD Super Cab 168" WB DRW XL (X3H)**

Price Level: 620 | Quote ID: War26X3Hc

Available Options (cont'd)

Selected	Code	Description	MSRP	Invoice
<input type="checkbox"/>	314	Ship-Thru: Reading Equipment & Distribution	\$0.00	\$825.00
<input type="checkbox"/>	31B	Ship-Thru: Reading Equipment	\$0.00	\$543.00
<input type="checkbox"/>	31S	Ship-Thru: Reading Equipment	\$0.00	\$150.00
<input type="checkbox"/>	31P	Ship-Thru: Roush CleanTech	Variable	Variable
<input type="checkbox"/>	31C	Ship-Thru: Zoresco Equipment	\$0.00	\$45.00
<input type="checkbox"/>	31Z	Ship-Thru: Knapheide	\$0.00	\$700.00
<input type="checkbox"/>	31H	Ship-Thru: Manning Truck Equipment	\$0.00	\$45.00
<input type="checkbox"/>	312	Ship-Thru: National Fleet Services	Variable	Variable
<input type="checkbox"/>	31Y	Ship Thru: Zoresco Equipment	\$0.00	\$45.00
<input type="checkbox"/>	FLADCR	Fleet Advertising Credit	\$0.00	-\$950.00
<input checked="" type="checkbox"/>	WARANT	Fleet Customer Powertrain Limited Warranty	N/C	N/C
Requires valid FIN code.				
<i>Ford is increasing the 5-year 60,000-mile limited powertrain warranty to 5-years, 100,000 miles. Only Fleet purchasers with a valid Fleet Identification Number (FIN code) will receive the extended warranty. When the sale is entered into the sales reporting system with a sales type fleet along with a valid FIN code, the warranty extension will automatically be added to the vehicle. The extension will stay with the vehicle even if it is subsequently sold to a non-fleet customer before the expiration. This extension applies to both gas and diesel powertrains. Dealers can check for the warranty extension on eligible fleet vehicles in OASIS. Please refer to the Warranty and Policy Manual section 3.13.00 Gas Engine Commercial Warranty. This change will also be reflected in the printed Warranty Guided distributed with the purchase of every new vehicle.</i>				
<input type="checkbox"/>	FINAL1	Fleet Final Order Date: TBD	N/C	N/C

Prices and content availability as shown are subject to change and should be treated as estimates only. Actual base vehicle, package and option pricing may vary from this estimate because of special local pricing, availability or pricing adjustments not reflected in the dealer's computer system. See salesperson for the most current information.

Prepared for: Rock Haglund

Public Works, City of Warrenton

Prepared by: SHARON TUCKER

07/29/2025



Northside Ford Truck Sales, Inc. | 6221 N E Columbia Blvd. Portland Oregon |

972182995

2026 F-350 Chassis 4x4 SD Super Cab 168" WB DRW XL (X3H)

Price Level: 620 | Quote ID: War26X3Hc

Available Options (cont'd)

Selected	Code	Description	MSRP	Invoice
<input type="checkbox"/>	56M	Ford US National Fleet Incentives Ford US National - 06/18/25	\$0.00	-\$500.00
<input type="checkbox"/>	X4W	Limited Slip w/4.10 Axle Ratio (LPO) (Fleet) Diesel only, see order guide for additional requirements. <i>Wide track.</i>	N/C	N/C

Emissions

<input checked="" type="checkbox"/>	425	50-State Emissions System	STD	STD
-------------------------------------	-----	---------------------------	-----	-----

General Info

<input type="checkbox"/>	ORDER1	Initial Order Date: TBD	N/C	N/C
<input type="checkbox"/>	START1	Start-Up Date: TBD	N/C	N/C
<input type="checkbox"/>	BUILD1	Build-Out Date: TBD	N/C	N/C

Prices and content availability as shown are subject to change and should be treated as estimates only. Actual base vehicle, package and option pricing may vary from this estimate because of special local pricing, availability or pricing adjustments not reflected in the dealer's computer system. See salesperson for the most current information.



City Commission Agenda Memo

Meeting Date: September 09, 2025
From: Kevin Gorman, Public Works Director
Subject: Auction of 2009 Vac-Con Vector Truck

Summary:

The Public Works Department is requesting approval to auction the City's 2009 Vac-Con Vector Truck through GovDeals. The vehicle is still operational; however, it has recently been replaced and is nearing the end of its service life.

Because the potential value of this asset was believed to be near the \$100,000 threshold that requires a public vote, staff obtained professional appraisals. Both appraisers valued the truck at less than \$100,000, confirming that the vehicle may be disposed of under the City's standard surplus process.

By auctioning this vehicle, the City seeks to responsibly dispose of surplus property while recovering funds that can be reinvested into Public Works operations or other initiatives that directly benefit residents.

The auction will be conducted on GovDeals, a secure platform used for the sale of government surplus property. This method ensures transparency, competitive bidding, and compliance with public property disposal requirements.

Recommendation/Suggested Motion:

"I move to approve the auction of the 2009 Vac-Con Vector truck for the benefit of the City of Warrenton."

Alternative:

None recommended

Fiscal Impact:

Proceeds from the sale will be reinvested into the Public Works Budget to support ongoing services and capital needs.

Attachments:

- Appraisal from Empathy Claims Inc.
- Appraisal from J & E Appraisal Services

Approved by City Manager: _____

A handwritten signature in blue ink, reading "Esther Moberg", written over a horizontal line.

HEAVY EQUIPMENT APPRAISAL REPORT

DATE: July 14, 2025 TO: Shannon Elston Claims Supervisor Empathy Claims, Inc. shannone@empathyclaims.com	CLAIM: 25-6-127-OR-SR INSURED: Warrenton Oregon CLAIMANT: D/LOSS: 7/1/2025 FILE NO: BOI25-43421
ENCL <input type="checkbox"/> Photographs <input checked="" type="checkbox"/> Market Evaluation <input type="checkbox"/> Supplemental Repairs <input type="checkbox"/> Repair Appraisal <input type="checkbox"/> Police Report <input checked="" type="checkbox"/> Bill for Services <input type="checkbox"/> CCC or Autosource <input checked="" type="checkbox"/> Other: 4 supporting comps	

EQUIPMENT 2009 International 7600 Vactor HXX Hydro Excavation Vacuum Truck			
SERIAL #: 1HTWHAAT49J175993		MILES/HRS: 24257/ 4540	
LICENSE:			
ESTIMATE: REPAIR TOTAL: \$ SALES TAX %: \$ - DEDUCTIBLE \$ - BETTERMENT: \$ - APPEARANCE ALLOWANCE: \$ + NET TOTAL: \$	VALUATION: REQUEST #: _____ ACTUAL CASH VALUE: \$88,575.00 SALES TAX @ %: \$ + TITLE TRANSFER FEE: \$ + ADJUSTED AMOUNT: \$88,575.00	STORAGE: EQUIPMENT LOCATION: Contact #: _____ STORAGE: \$ _____ /DAY TOWING: \$ _____	
Total Loss: <input type="checkbox"/> Yes <input type="checkbox"/> No	SALVAGE:	Bidder: _____ Bid Amount: \$ _____ Quote #: _____	Salvage moved: <input type="checkbox"/> Yes <input type="checkbox"/> No Date: _____ Stock #: _____

REMARKS:

We ran the spec and build sheets for this 2009 International 7600 built as a Hydro Excavation Vacuum Truck. Our assignment was to run a market value on this piece of equipment to see if the ACV exceeds \$100,000.00 in asset value. Our market survey is based using a 4 comparable methodology of like kind and quality pieces of equipment for sale in publications dated July 2025. We found 4 items of like kind ranging from 2009 model years to 2012 model years and have an established ACV of \$88,575.00 based on equipment for sale. The price can vary by the season and per application. Our review based on the information provided will support this ACV of \$88,575.00. Similar trucks have sold at auction for \$9K-\$70K based on history from Ritchie Bros. Equipment Auctions.

J & E Appraisal Services

6700 North Linder Road. St 156 Box 207

Meridian, ID 83646

Phone (206) 363-8205

Fax (206) 363-8183

Email office@jande.com

APPRAISAL REPORT - FILE # 3663927

COMPANY		VEHICLE OWNER	
Company	PVT - PRIVATE	Name	Lily Newman
Adjuster	Lily Newman	Address	45 SW 2nd St
Claim Number	NA	City	Warrenton
Policy Number	NA	State	OR
Deductible		Zip	97146
Insured Name		Mobile Phone	(971) 286-2043
Date of Loss		Home Phone	(503) 861-0912
Date Contacted	July 21, 2025	Work Number	
Date Inspected	July 25, 2025	Email	lnewman@warrentonoregon.us
Loss Type			
Claim For			
Assignment Type	Desk_review		
Appraiser	Marv Bentz		
VEHICLE INFO		VEHICLE LOCATION	
Year	2009	Location	Workplace
Make	Vaccon	Location Name	
Model	Vactor	Address	45 SW 2nd St
VIN	1HTWHAAT49J175993	City	Warrenton
License Plate		State	OR
Color	White	Zip	97146
Mileage		Phone	(971) 286-2043
Driveable	Yes	Fax	
TIRE INFORMATION			
	Tire Make	Size	Tread Depth
Left Front			
Right Front			
Left Rear			
Right Rear			
TOWING & SALVAGE		TOTAL LOSS	
Towing Charges	\$ 0.00	Total Loss	No
Lien Fee	\$ 0.00	Driveable	Yes
Admin Fee	\$ 0.00	Total Loss Valuation	CCC Valuescope
Other Charges	\$ 0.00	Request #	126430472
Storage Fee (per day)	\$ 0.00	Valuation Amount / TL %	\$97918.00 / 0.00%
Storage Since		NADA Value / TL %	\$0.00 /
ESTIMATE		SALVAGE BIDS	
Appraisal Amount	\$ 0.00	Salvage Yard / Contact	Phone Amount
UPD Amount	\$ 0.00	/	0.00
Betterment Amount	\$ 0.00	/	0.00
Deductible	\$	/	0.00
Net Total	\$ 0.00		
Agreed Price			

Agreed By		REPAIR SHOP INFO	
Days to Repair		Location Name	
Estimate Released	Owner	Address	
Supplement #1	0.00	City State Zip	
Supplement #2	0.00	Phone	
Supplement #3	0.00	Fax	
Supplement #4	0.00	Email	
Supplement #5	0.00	TIN	

Appraiser Comments
Per your request, attached is the ACV of your 2009 International Vaccoon Vactor. The CCC Market Value Report is attached for your review.



City Commission Agenda Memo

Meeting Date: September 9th, 2025
 From: Rock Haglund, Interim Public Works Director
 Subject: Request for Road Closure- Iredale Culvert Replacement Project Phase 2

Summary:

The City's contractor for the Iredale Culvert Replacement Project Phase 2 has requested a temporary full road closure of Iredale Street from 5th Avenue to the active project work zone near the Hammond Marina (See attached map) to complete deep trench excavation work safely. After review, staff concurs with the contractor's assessment that maintaining traffic flow would not be feasible or safe given excavation depths of up to **14 feet**, the use of large excavators, dump trucks, and onsite loaders.

To minimize disruption, staff recommends the approval of Option 1: traffic control plan: a full road closure lasting 2–3 days between September 16th–19th, 2025. Advanced signage and a posted detour route via 5th Avenue and Lake Drive will be in place, and a turnaround area has been identified for vehicles leaving from the Hammond Marina. While some impact to marina traffic is expected, access will remain available through the designated turnaround and detour signage.

Recommendation/Suggested Motion:

"I move to approve the road closure of Iredale Street between 5th Avenue and the project work zone near the Hammond Boat Basin from September 16th to 19th, 2025, for the Iredale Culvert Replacement Project Phase 2, as outlined in the approved traffic control plan."

Alternative:

None recommended

Fiscal Impact:

No additional fiscal impact is anticipated beyond the approved project budget. Costs associated with the temporary traffic control and detour signage are included within the construction contract.

Attachments:

(All supporting documentation, i.e., maps, exhibits, etc., must be attached to this memorandum.)

- Iredale Culvert Replacement- Phase 2 North Excavation Traffic Control Plan
- City Map

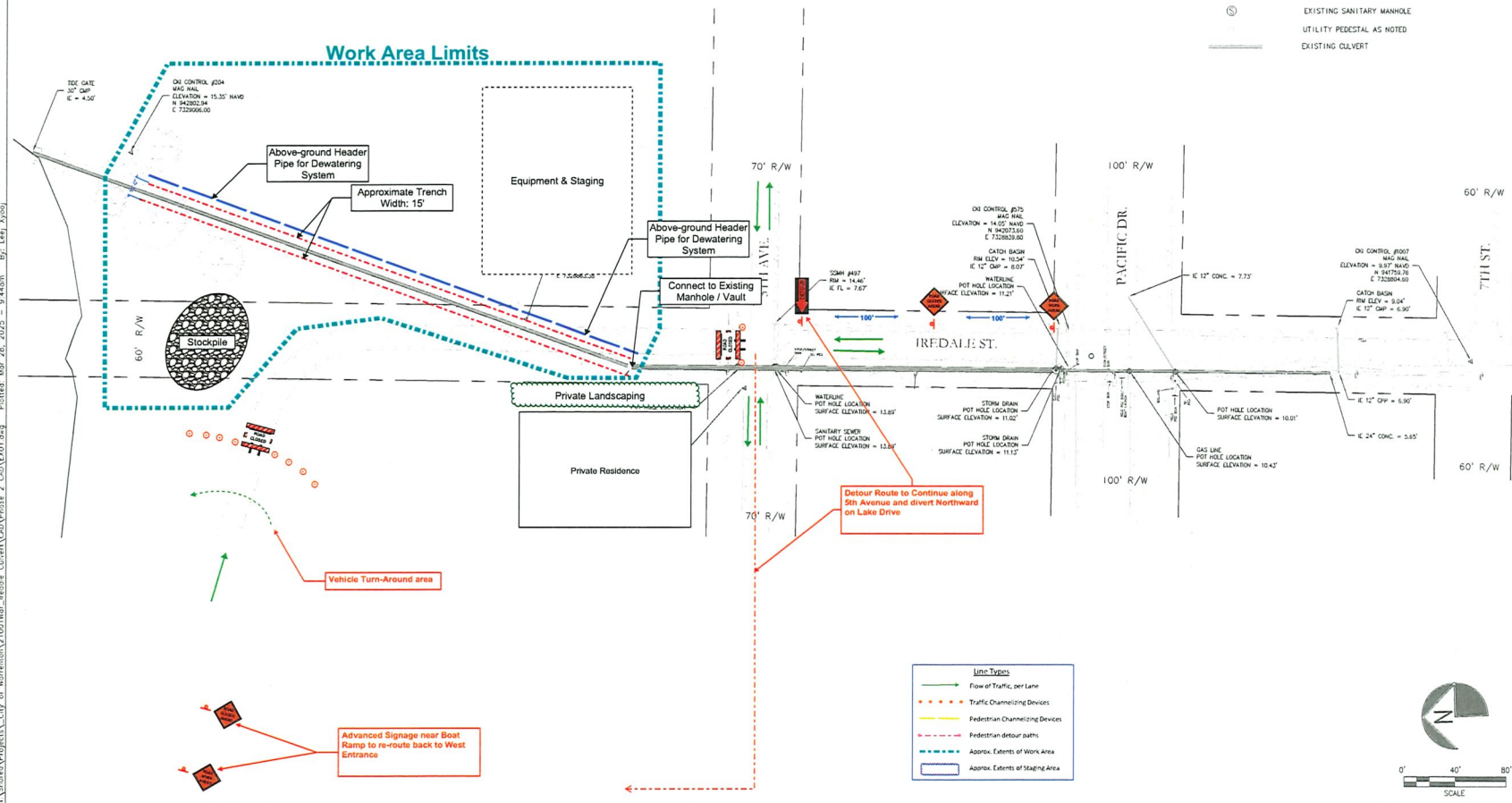
Approved by City Manager: _____

Iredale Culvert Replacement - Phase 2
North Excavation Traffic Control Plan
Sheet 1 of 1

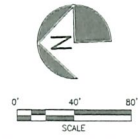
Option 1: Full road closure of Iredale Street from 5th Ave. to corner of Iredale ST expected 2-3 Days from September 16th to 19th, 2025

LEGEND

- PROPERTY LINE
- - - EXISTING GROUND CONTOUR
- - - EXISTING WATER LINE
- - - EXISTING SANITARY LINE
- - - EXISTING GAS LINE
- - - EXISTING OVERHEAD POWER
- - - EXISTING POWER POLE
- - - EXISTING WATER METER
- - - EXISTING WATER VALVE
- - - EXISTING FIRE HYDRANT
- - - EXISTING CATCH BASIN
- - - EXISTING STORM MANHOLE
- - - EXISTING SANITARY MANHOLE
- - - UTILITY PEDESTAL AS NOTED
- - - EXISTING CULVERT



- Line Types:
- Flow of Traffic, per Lane
 - - - Traffic Channelizing Devices
 - - - Pedestrian Channelizing Devices
 - - - Pedestrian detour paths
 - - - Approx. Extents of Work Area
 - - - Approx. Extents of Staging Area



CITY OF WARRENTON
IREDALE CULVERT REPLACEMENT PROJECT
EXISTING CONDITIONS
HAMMOND, OR

NO.	DATE	BY	REVISION COMMENTS
1	03/28/2025	JAL	Initial Design

Project No. 21001
Drawing No. EX01.DWG
EX1
Sheet No.

BID SET - 03.28.2025





City Commission Agenda Memo

Meeting Date: September 9th, 2025
From: Rock Haglund, Interim Public Works Director
Subject: Change Order No. 2 – Raw Waterline Replacement RP-2 Project – Construction Contract

Summary:

During construction of the Raw Waterline Replacement RP-2 Project, excess excavated soil was hauled to Knife River for disposal. The soil was denied due to a strong odor of fuel contamination. Trench Line Excavation was then required to return the soil to the project site, stockpile it, and install perimeter erosion control measures until testing and further direction from DEQ could be obtained. This additional work resulted in a cost increase of \$7,384.37, bringing the total contract amount to \$920,187.87.

Staff requests approval of Change Order No. 2 to the construction contract with Trench Line Excavation for the Raw Waterline Replacement RP-2 Project.

Recommendation/Suggested Motion:

"I move to approve Change Order No. 2 to the construction contract with Trench Line Excavation for the Raw Waterline Replacement RP-2 Project, increasing the current not-to-exceed contract amount from \$912,803.50 to \$920,187.87"

Alternative:

None recommended

Fiscal Impact:

Sufficient funding is available in the FY 2025–2026 adopted budget under the Raw Waterline Replacement RP-2 project. No additional fiscal impact is anticipated beyond the approved budget.

Attachments:

(All supporting documentation, i.e., maps, exhibits, etc., must be attached to this memorandum.)

- Change Order #2
- Trench Line Change Order Proposal/Cost Estimate

Approved by City Manager: _____

A handwritten signature in blue ink, appearing to read "Esther Molloy", written over a horizontal line.

Change Order No. 2

Date of Issuance: _____

Effective Date: _____

Owner: City of Warrenton	
Project: Raw Waterline RP-2- Construction Contr	City Project #: 029-430-620096
Engineer: Consor Engineering Inc	Engineer's Proj #: WR231024OR
Contractor: Trenchline Excavation	Contractor's #:
Original Contract: 4/29/2025	Notice to Proceed Date: May 29, 2025
City Project Manager: Twyla Vittetoe, Engineer Technician	
Project Location: Raw Water Pipeline on Lewis & Clark Mainline	

The Contract Documents are modified as follows upon execution of this Change Order

Description: Increasing the current contract not-to-exceed price from \$912,803.50 to \$920,187.87

Work shall include:

1. Hauling contaminated soil from Knife River, back to job site and moving material to stockpile location.
2. Erosion Control for perimeter of contaminated soil stockpile.
- 3.
- 4.

Original contract times: 150 Days

☐ Working days

Calendar days

5. Extend contract days _____

_____ New contract days

N/A

Substantial Completion Date: 09/30/2025

This will require substantial completion by: 09/30/2025

Attachments: Contractor's request and invoices

Current Contract Price:	\$	912,803.50
Increase of this Change Order:	\$	7,384.37
Contract Price incorporating this Change Order:	\$	920,187.87

The above prices and specifications of the change order are satisfactory and are hereby accepted. This change order amount and extension of time constitutes total compensation for the change, including compensation for all impacts and delays relating to the change and their cumulative effect on the project to date. All work shall be performed under same terms and conditions as specified in original contract unless otherwise stipulated.

RECOMMENDED

ACCEPTED:

ACCEPTED:

Engineer signature

Contractor signature

Owner Signature/Title

Date:

Date:

Date:

Approved by Funding Agency (if applicable):

Agency:

Title:

Date:

Project Status Form

Owner: City of Warrenton	0	City Project #: 029-430-620096
Project: Raw Waterline RP-2- Construction Contract	0	Engineer's Proj #: WR231024OR
Engineer: Consor Engineering Inc	0	Contractor's #: 0
Contractor: Trenchline Excavation	0	0 Notice to Proceed Date: May 29, 2025
Original Contract: \$898,181.59		
City Project Manager: Twyla Vittetoe, Engineer Technician		
Project Location: Raw Water Pipeline on Lewis & Clark Mainline		

CO	Change Order Amount/ Allowance Amt.	C.O. Days	Commission Date	REASON FOR CHANGE
	New Contract Amount	New Total	New Comp. Date	
#1	\$ 14,621.91			Connection depth at station 38+51 was 9ft rather than 3ft.
	\$912,803.50	N/A	N/A	
#2	\$7,384.37	N/A	N/A	Hauling and movement of contaminated soils on job site and erosion control for contaminated stockpile.
#3				
#4				
#5				
#6				
#7				
#8				
#9				
#10				
#11				
#12				
#13				

Project Summary		
Contract amount	Contract days	Completion Date
\$ 920,187.87	N/A	N/A



33871 SE Eastgate Circle
Corvallis, Or. 97333
CCB # 105905
541.752.0481
541.207.3669

Change Proposal #2 Price Breakdown

PROJECT: Raw Waterline Replacement RP-2 Project
DATE: 6/26/2025

DESCRIPTION OF WORK -

Below is the extra cost associated with Trench Line hauling the contaminated soil that was dumped at Knife River back to the project site on June 19th. Trench Line had 2 trucks hauling dirt back from Knife River from 11AM - 6PM on June 19th and one excavator moving the sidecasted material to the stock pile as requested by Justin over the phone.

LABOR	UNIT PRICE	June 19th Hauling Dirt from KR			TOTAL UNITS	TOTAL COST
Superintendent	\$ 85.00				0	\$ -
OT/Night	\$ 127.50				0	\$ -
Foreman	\$ 75.70	7			7	\$ 529.90
OT/Night	\$ 113.55				0	\$ -
Operator	\$ 75.70	7			7	\$ 529.90
OT/Night	\$ 113.55				0	\$ -
Laborer	\$ 57.71				0	\$ -
OT/Night	\$ 86.57				0	\$ -
Project Manager	\$ 85.00	1			1	\$ 85.00
Flagger	\$ 85.00				0	\$ -
OT/Night	\$ 127.50				0	\$ -

EQUIPMENT

Foreman Pick Up / Small Tools	\$ 250.00				0	\$ -
Hand Compactor / Saws	\$ 30.00				0	\$ -
Traffic Control - Signs (EA/Day)	\$ 50.00				0	\$ -
					0	\$ -
299 Skid Steer / Sweeper	\$ 105.00				0	\$ -
IT Loader	\$ 130.00				0	\$ -
Roller	\$ 50.00				0	\$ -
304 Excavator	\$ 100.00				0	\$ -
305 Excavator	\$ 105.00				0	\$ -
305.5 Excavator	\$ 105.00				0	\$ -
305/305.5 w/ Breaker OR Hoe-Pack	\$ 130.00				0	\$ -
308 Excavator	\$ 110.00				0	\$ -
308 w/ Breaker OR Hoe-Pack	\$ 140.00				0	\$ -
315 Excavator	\$ 135.00				0	\$ -
316 Excavator	\$ 135.00				0	\$ -
316 Excavator w/ Pinwheel	\$ 150.00				0	\$ -
320 Excavator	\$ 140.00				0	\$ -
325 Excavator w/ Hoe-Pack	\$ 220.00	7			7	\$ 1,540.00
End Dump Truck	\$ 150.00	14			14	\$ 2,100.00
Truck & Tilt Deck Trailer	\$ 260.00				0	\$ -
Shoring Rental	\$ 2,000.00				0	\$ -
Spot Box Shoring per day	\$ 175.00				0	\$ -
Steel Sheet (each per day)	\$ 50.00				0	\$ -

MATERIALS

Rock (Price per TN)	\$ 15.85				0	\$ -
Dump (Price per CY)	\$ 10.50				0	\$ -
Dump Charge for Debris in Dirt	\$ 500.00				0	\$ -

					0	\$ -
					0	\$ -
					0	\$ -

SUBCONTRACTORS

Hydroseeding of Extra Acre	\$ 5,000.00				0	\$ -
					0	\$ -
					0	\$ -
					0	\$ -

TOTALS

	Cost Totals	Mark Up Percent	Mark Up Amount	Subtotal
Labor	\$ 1,144.80	22%	\$ 251.86	\$ 1,396.66
Equipment	\$ 3,640.00	17%	\$ 618.80	\$ 4,258.80
Materials	\$ -	17%	\$ -	\$ -
Subcontracts	\$ -	17%	\$ -	\$ -

TOTAL PRICE	\$ 5,655.46
--------------------	--------------------



33871 SE Eastgate Circle
Corvallis, Or. 97333

CCB # 105905

541.752.0481

541.207.3669

**Change Proposal #3
Price Breakdown**

PROJECT: Raw Waterline Replacement RP-2 Project

DATE: 8/7/2025

DESCRIPTION OF WORK -

EROSION CONTROL FOR PERIMETER OF CONTAMINATED STOCK PILE.

LABOR	UNIT PRICE	Erosion Control for Contaminated Stock Pile	TOTAL UNITS	TOTAL COST
Superintendent	\$ 85.00		0	\$ -
OT/Night	\$ 127.50		0	\$ -
Foreman	\$ 75.70	1	1	\$ 75.70
OT/Night	\$ 113.55		0	\$ -
Operator	\$ 75.70		0	\$ -
OT/Night	\$ 113.55		0	\$ -
Laborer (2 of them)	\$ 57.71	10	10	\$ 577.10
OT/Night	\$ 86.57		0	\$ -
Project Manager	\$ 85.00		0	\$ -
Flagger	\$ 85.00		0	\$ -
OT/Night	\$ 127.50		0	\$ -

EQUIPMENT

Foreman Pick Up / Small Tools	\$ 250.00		0	\$ -
Hand Compactor / Saws	\$ 30.00		0	\$ -
Traffic Control - Signs (EA/Day)	\$ 50.00		0	\$ -
			0	\$ -
299 Skid Steer / Sweeper	\$ 105.00		0	\$ -
IT Loader	\$ 130.00		0	\$ -
Roller	\$ 50.00		0	\$ -
304 Excavator	\$ 100.00		0	\$ -
305 Excavator	\$ 105.00		0	\$ -
305.5 Excavator	\$ 105.00		0	\$ -
305/305.5 w/ Breaker OR Hoe-Pack	\$ 130.00		0	\$ -
308 Excavator	\$ 110.00		0	\$ -
308 w/ Breaker OR Hoe-Pack	\$ 140.00		0	\$ -
315 Excavator	\$ 135.00		0	\$ -
316 Excavator	\$ 135.00		0	\$ -
316 Excavator w/ Pinwheel	\$ 150.00		0	\$ -
325 Excavator	\$ 150.00		0	\$ -
325 Excavator w/ Hoe-Pack	\$ 220.00		0	\$ -
End Dump Truck	\$ 150.00		0	\$ -
TRUCK AND TRAILER (5 TRUCKS & TRAILERS)	\$ 200.00		0	\$ -
Shoring Rental	\$ 2,000.00		0	\$ -
Spot Box Shoring per day	\$ 175.00		0	\$ -
Steel Sheet (each per day)	\$ 50.00		0	\$ -

MATERIALS

Rock (Price per TN)	\$ 15.85		0	\$ -
Dump (Price per TON)	\$ 66.00		0	\$ -
Dump Charge for Debris in Dirt			0	\$ -

				0	\$ -
WASTE PROFILE	\$ 100.00			0	\$ -
Wattles, silt fence, and tarping	\$ 797.00	1		1	\$ 797.00

SUBCONTRACTORS

TESTING OF CONTAMINATED SOIL PER TEST	\$ 900.00			0	\$ -
				0	\$ -
				0	\$ -
				0	\$ -

TOTALS

	Cost Totals	Mark Up Percent	Mark Up Amount	Subtotal
Labor	\$ 652.80	22%	\$ 143.62	\$ 796.42
Equipment	\$ -	17%	\$ -	\$ -
Materials	\$ 797.00	17%	\$ 135.49	\$ 932.49
Subcontracts	\$ -	17%	\$ -	\$ -

TOTAL PRICE	\$ 1,728.91
--------------------	--------------------