

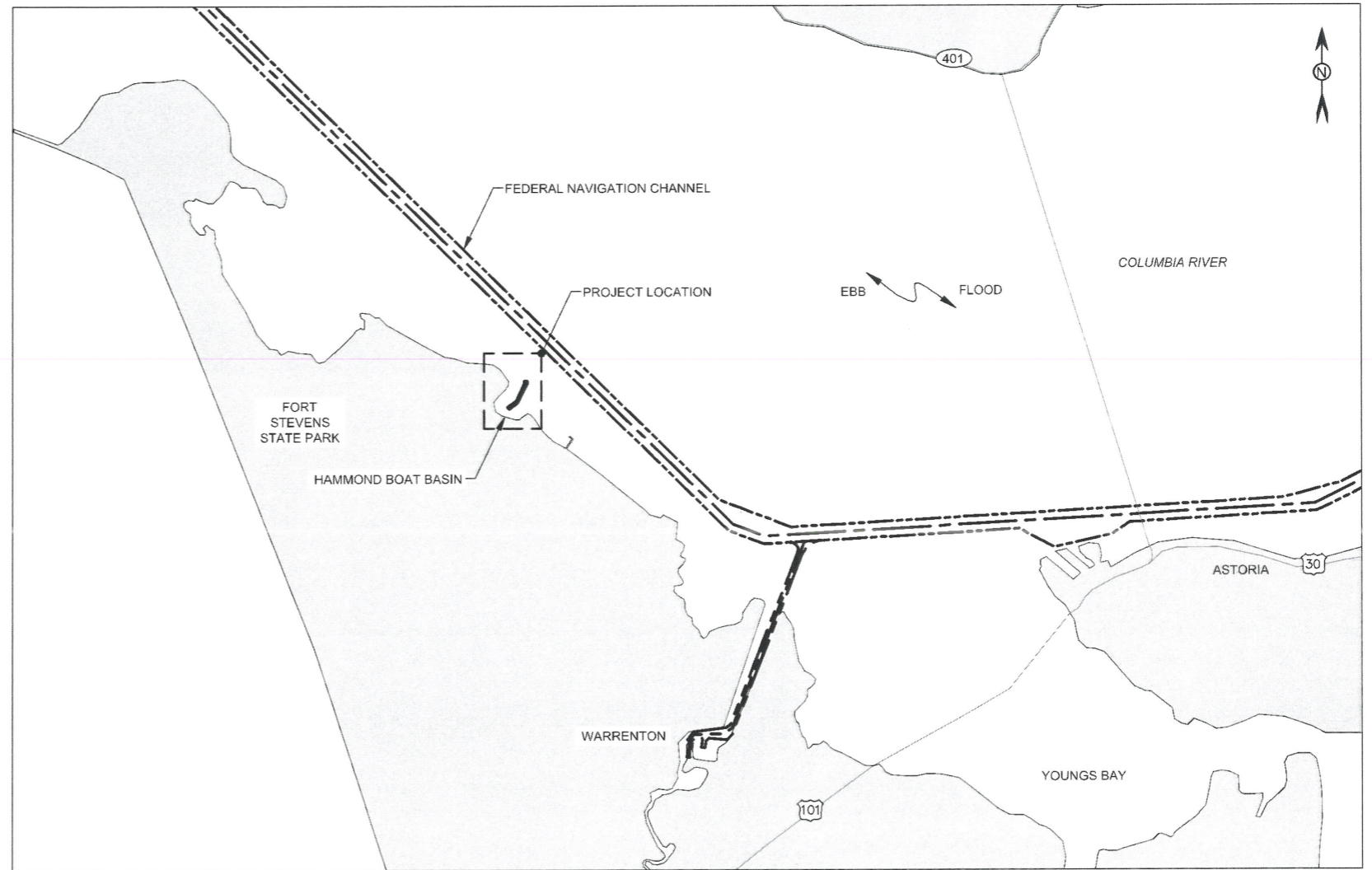
CITY OF WARRENTON

HAMMOND BOAT BASIN MAINTENANCE DREDGING



VICINITY MAP
(NOT TO SCALE)

SHEET INDEX	
SHEET NO.	TITLE
1	VICINITY MAP
2	GENERAL NOTES
3	EXISTING SITE PLAN
4	DREDGE PRISM PLAN
5	IN-WATER DISPOSAL SITE PLAN
6	SECTIONS 1



LOCATION MAP


0 3,000 6,000
SCALE IN FEET

M
MOTT
MACDONALD


110 James Street
Suite 101
Edmonds, Washington 98020

T +1 (425) 778 6243
F +1 (425) 778 6883
W www.mottmacamericas.com

Client



0	7/16/19	TM	FOR BID	GC	AP
Rev	Date	Drawn	Description	Ch'k'd	App'd


7/17/19
Project Number 391895
Expires 12/31/20
B/O 1
Total 7

Designed	G. Clunies	Eng check	
Drawn	T. Morrison	Coordination	
Dwg check	A. Porter	Approved	
Scale at ANSI D	Status	Rev	Security
As Noted			
Drawing Number			

Title

City of Warrenton
Hammond Boat Basin
Maintenance Dredging

VICINITY MAP

GENERAL NOTES

1.

ALL DIMENSIONS IN FEET.
2.

SPECIAL CARE TO BE TAKEN TO AVOID DAMAGE TO EXISTING MOORAGE STRUCTURES, PILING, BOAT LAUNCH, AND FLOATS. EXISTING STRUCTURE LOCATIONS SHOWN ARE APPROXIMATE AND EXACT LOCATION SHALL BE VERIFIED BY THE CONTRACTOR PRIOR TO CONSTRUCTION BIDDING.
3.

CONTRACTOR IS RESPONSIBLE FOR DAMAGE TO ANY EXISTING STRUCTURES WITHIN THE PROJECT SITE INCLUDING, BUT NOT LIMITED TO, EXISTING MOORAGE STRUCTURES, PILING, BOAT LAUNCH, AND FLOATS.
4.

UNDERGROUND IMPROVEMENTS, PIPELINES, AND/OR UTILITIES WERE NOT LOCATED AND ARE NOT SHOWN ON THE PLANS. CONTRACTOR IS RESPONSIBLE FOR FIELD LOCATION, VERIFICATION, AND MARKING OF ALL UNDERGROUND UTILITIES PRIOR TO THE START OF ANY CONSTRUCTION ACTIVITY.
5.

WORK AREA LIMITS ARE SHOWN HEREIN AND ARE DEFINED AS:

a.

THE INTERSECTION OF THE AWARDED DREDGE AREA TEMPLATE WITH THE EXISTING GROUND SURFACE.

b.

UPLAND AREAS NECESSARY TO ACCESS THE DREDGE SITE.

c.

DISPOSAL AREA.
6.

OPERATION, TRANSIT OR STAGING OF CONSTRUCTION EQUIPMENT AND PLACEMENT OR STOCK PILING OF MATERIALS SHALL BE CONDUCTED WITHIN THE WORK AREA LIMITS. TO THE EXTENTS ALLOWED AND DEFINED BY THESE CONTRACT DRAWINGS AND TECHNICAL SPECIFICATIONS.
7.

IF ADDITIONAL STAGING AREA SPACE IS REQUIRED, IT IS THE CONTRACTORS RESPONSIBILITY TO ACQUIRE NECESSARY EASEMENTS AND AGREEMENTS AND COORDINATE USAGE AND ACCESS OF SUCH SPACES.
8.

THE CONTRACTOR SHALL NOT PLACE EQUIPMENT, STOCKPILE DREDGED MATERIAL OR ANY OTHER MATERIALS OUTSIDE THE WORK AREA LIMITS.
9.

FLUCTUATIONS IN WATER LEVEL, CURRENTS, AND WAVES AT THE PROJECT SITE OCCUR ON A DAILY BASIS. THE CONTRACTOR IS RESPONSIBLE FOR UTILIZING EQUIPMENT AND METHODS APPROPRIATE FOR THE CONDITIONS AT THE TIME OF CONSTRUCTION.
10.

SEDIMENTS CHARACTERIZATION. SEE TECHNICAL SPECIFICATION FOR MATERIAL CHARACTERIZATION.

SURVEY NOTES

1.

SURVEY CONTROL:

a.

VERTICAL DATUM: ALL ELEVATIONS ARE IN MEAN LOWER LOW WATER (MLLW), U.S. SURVEY FEET.

b.

HORIZONTAL DATUM: OREGON STATE PLANE NORTH, NAD83, U.S. SURVEY FEET.
2.

ELEVATIONS, CONTOURS, AND BOUNDARIES SHOWN ARE BASED ON:

a.

SURVEY PERFORMED BY SOLMAR HYDRO ON 01-24-2018 (MM-DD-YYYY). CONDITIONS AT THE PROJECT SITE ELEVATIONS ARE DYNAMIC AND HAVE LIKELY CHANGED SINCE THE TIME OF THE SURVEY.
3.

THE SURVEY DATA CAN ONLY BE CONSIDERED REPRESENTATIVE OF THE CONDITIONS AT THE TIME THE SURVEY WAS TAKEN. CONTRACTOR TO CONDUCT A PRE/POST DREDGE SURVEY BY A LICENSED PROFESSIONAL LAND SURVEYOR. CONTRACTOR TO FIELD VERIFY LOCATION OF DREDGING AREAS RELATED TO EXISTING STRUCTURES PRIOR TO START OF DREDGING WORK.

DREDGING AND DISPOSAL (PLACEMENT)

1.

DISPOSAL OF DREDGE MATERIAL AT THE IN-WATER DISPOSAL SITE IS RESTRICTED TO EBB-TIDE FLOW.
2.

DREDGING BELOW THE OVERDREDGE ALLOWANCE INDICATED ON THE CONTRACT PLANS IS CONSIDERED EXCESSIVE DREDGING. EXCESSIVE DREDGING AND DREDGING OUTSIDE OF THE 2019 DREDGE BOUNDARY IS NOT PERMITTED AND WILL NOT BE COMPENSATED.
3.

THE CONTRACTOR SHALL CONDUCT PLACEMENT OF DREDGED MATERIAL AT THE IN-WATER DISPOSAL SITE IN A MANNER TO MEET THE WATER QUALITY PERMIT REQUIREMENTS AND NOT EXCEED THE GEOMETRIC LIMITS SHOWN.

ABBREVIATIONS

B.M.

BENCHMARK

B.O.

BOTTOM OF

CL

CENTERLINE

CY

CUBIC YARDS

EA

EACH

EL

ELEVATION

(E)

EXISTING I.E. (E) RAMP

FT

FEET

HTL

HIGH TIDE LEVEL

MLW

MEAN LOW WATER

MIN

MINIMUM

MAX

MAXIMUM

NAV

NAVIGATION

N.I.C.

NOT IN CONTRACT

O.C.

ON CENTER

OHW

ORDINARY HIGH WATER

T.O.

TOP OF

TYP.

TYPICAL

WP

WORKING POINT

@

AT

'

MINUTES OR FEET

"

SECONDS OR INCHES

LEGEND

MATERIAL TO BE DREDGED/EXCAVATED

EXISTING RIPRAP

EXISTING PILE

BUOY

#

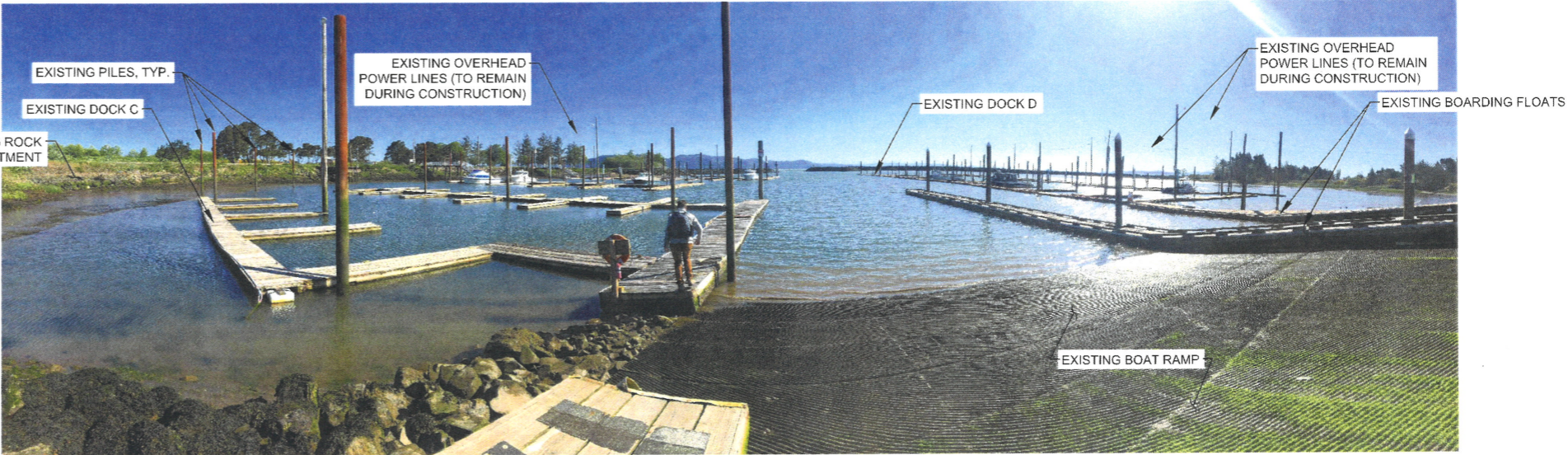
CONSTRUCTION NOTE

#

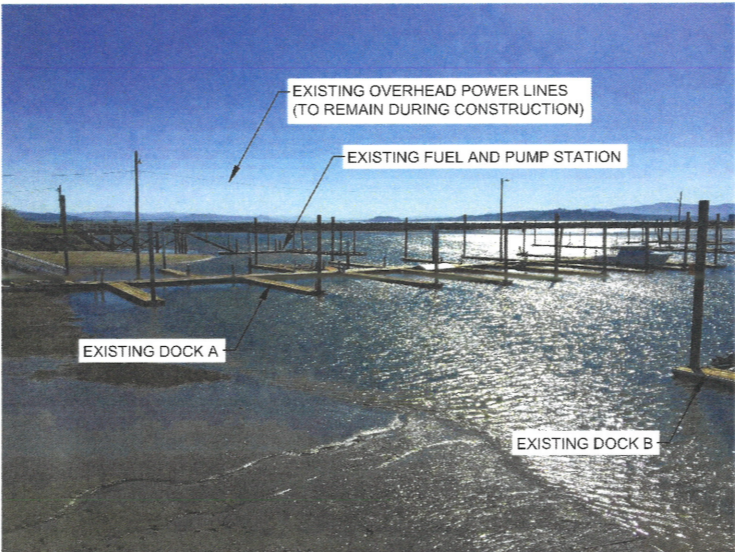
FLOAT IDENTIFICATION

#

GROUND PHOTO



GROUND PHOTO 1



GROUND PHOTO 2

M

M

MOTT

MACDONALD

110 James Street

Suite 101

Edmonds, Washington 98020

T +1 (425) 778 6243

F +1 (425) 778 6883

W www.mottmacamericas.com

Client



0	7/16/19	TM	FOR BID	GC	AP	
Rev	Date	Drawn	Description	Ch'k'd	App'd	

REGISTERED PROFESSIONAL ENGINEER

6840

OR OREGON

PHILIP ROBERT PHILLIPS

04/19/2017

7/19/19

Expires 12/31/20

Project Number

391895

B/O

2

Total

7

Designed	G. Clunies	Eng check		
Drawn	T. Morrison	Coordination		
Dwg check	A. Porter	Approved		
Scale at ANSI D	Status	Rev	Security	
As Noted				
Drawing Number				

Title

City of Warrenton
Hammond Boat Basin
Maintenance Dredging

GENERAL NOTES

LEGEND

- EXISTING BATHYMETRIC CONTOUR
- USACE ENTRANCE CHANNEL PROJECT
- MHHW MEAN HIGHER HIGH WATER (APPROX.)
- OVERHEAD POWER LINES
- STEEL PILES
- TIMBER PILES
- FLOATS
- CONCRETE BOAT RAMP
- SCOUR PROTECTION
- REVTMENT

NOTES:

- DEPTHS SHOWN ARE FROM 2018-01-24 SURVEY BY SOLMAR HYDRO. QUANTITIES SHOWN BASED ON THIS SURVEY, DO NOT INCLUDE ANY SEDIMENTATION SINCE THAT TIME. SEDIMENTATION RATE ESTIMATED AT 0.4FT/YR BASED ON HISTORICAL OBSERVATIONS.
- VERTICAL DATUM: MEAN LOWER LOW WATER (MLLW), U.S. SURVEY FEET
- HORIZONTAL DATUM: OREGON STATE PLANE NORTH, NAD83 U.S. SURVEY FEET.
- DOCK AND BASEMAP GEOMETRY IS APPROXIMATE. TO BE FIELD VERIFIED BY CONTRACTOR PRIOR TO BIDDING.
- PILE LOCATIONS ARE APPROXIMATE.



TIDAL WATER LEVELS (MLLW)

MEAN HIGHER HIGH WATER	7.64 FT
MEAN LOWER LOW WATER	0.00 FT

SITE PLAN



M M
MOTT
MACDONALD

110 James Street
Suite 101
Edmonds, Washington 98020

T +1 (425) 778 6243
F +1 (425) 778 6883
W www.mottmacamericas.com

Client



0	7/16/19	TM	FOR BID	GC	AP
Rev	Date	Drawn	Description	Ch'kd	App'd

Project Number: 391895
Expires: 7/17/19
B/O: 3
Total: 7

DESIGNED BY: G. Clunies
DRAWN BY: T. Morrison
CHECKED BY: A. Porter
Scale at ANSI D
Drawing Number: As Noted

Designed	G. Clunies	Eng check	
Drawn	T. Morrison	Coordination	
Dwg check	A. Porter	Approved	
Scale at ANSI D	Status	Rev	Security
Drawing Number	As Noted		

City of Warrenton
Hammond Boat Basin
Maintenance Dredging
EXISTING SITE PLAN

LEGEND

- EXISTING BATHYMETRIC CONTOUR
- USACE ENTRANCE CHANNEL PROJECT
- MHHW MEAN HIGHER HIGH WATER (APPROX.)
- DREDGE BOUNDARY
- ADDITIVE BID 1
- ADDITIVE BID 2
- ADDITIVE BID 3
- STEEL PILES
- TIMBER PILES

NOTES:

- DEPTHS SHOWN ARE FROM 2018-01-24 SURVEY BY SOLMAR HYDRO. QUANTITIES SHOWN BASED ON THIS SURVEY. DO NOT INCLUDE ANY SEDIMENTATION SINCE THAT TIME. SEDIMENTATION RATE ESTIMATED AT 0.4FT/YR BASED ON HISTORICAL OBSERVATIONS.
- FLOAT LOCATIONS ARE APPROXIMATE AND NOT ALL PILES MAY BE SHOWN.
- ALL WORK TO BE CONDUCTED BELOW HTL. HTL ESTIMATED TO BE 1-2 FEET ABOVE MHHW.
- DEBRIS SHOULD BE EXPECTED TO BE ENCOUNTERED DURING DREDGE ACTIVITIES. QUANTITY AND TYPE (E.G. CHAIN, ROPE, ANCHOR, ETC.) IS ANTICIPATED TO BE TYPICAL OF AN ACTIVE MARINA.
- DO NOT DISTURB TOE OF CONCRETE BOAT LAUNCH OR SCOUR PROTECTION. CONTRACTOR TO PROBE TO LOCATE EDGE OF BOAT LAUNCH SCOUR PROTECTION. DREDGING AT THE BOAT RAMP IS PERMITTED DOWN TO THE MAXIMUM OF THE FOLLOWING ELEVATIONS:
A) EXISTING BOAT RAMP ELEVATIONS
B) -8.0 FT MLLW
- CONTRACTOR TO VERIFY LOCATIONS OF DREDGE LIMITS RELATIVE TO DOCKS. IF ADJUSTMENTS ARE REQUIRED TO ALIGN WORKING AREAS WITH DOCKS, CONTRACTOR SHALL VERIFY WITH OWNER PRIOR TO CONSTRUCTION.
- SPECIAL CARE IS NECESSARY TO DREDGE FROM TOP OF SLOPE DOWN TO PROTECT UPPER SLOPE.
- 3-1/2" CORPS OF ENGINEERS-U.S. ARMY BRASS CAP MARKED "HAM-BAY 1971" IN 8" X 10" CONCRETE BLOCK, TOP 2" BELOW GROUND. AN ORANGE CARSONITE GUARD POST IS 2.8' WEST. MONUMENT IS SHOWN ON MAP B-6940. HELD FOR BASIS OF BEARINGS.
N: 942845.263 E: 7328550.855
- UPLAND STAGING AREA TO BE COORDINATED WITH CITY OF WARRENTON, IF REQUIRED.

DREDGING BID UNIT	APPROXIMATE VOLUME (CY)
BASE BID	30,000
ADDITIVE BID 1	6,500
ADDITIVE BID 2	13,800
ADDITIVE BID 3	7,500

TIDAL WATER LEVELS (MLLW)	
MEAN HIGHER HIGH WATER	7.64 FT
MEAN LOWER LOW WATER	0.00 FT

DREDGE PLAN	
0	80
0	160
SCALE IN FEET	

M M
MOTT MACDONALD

110 James Street
Suite 101
Edmonds, Washington 98020

T +1 (425) 778 6243
F +1 (425) 778 6883
W www.mottmac.com

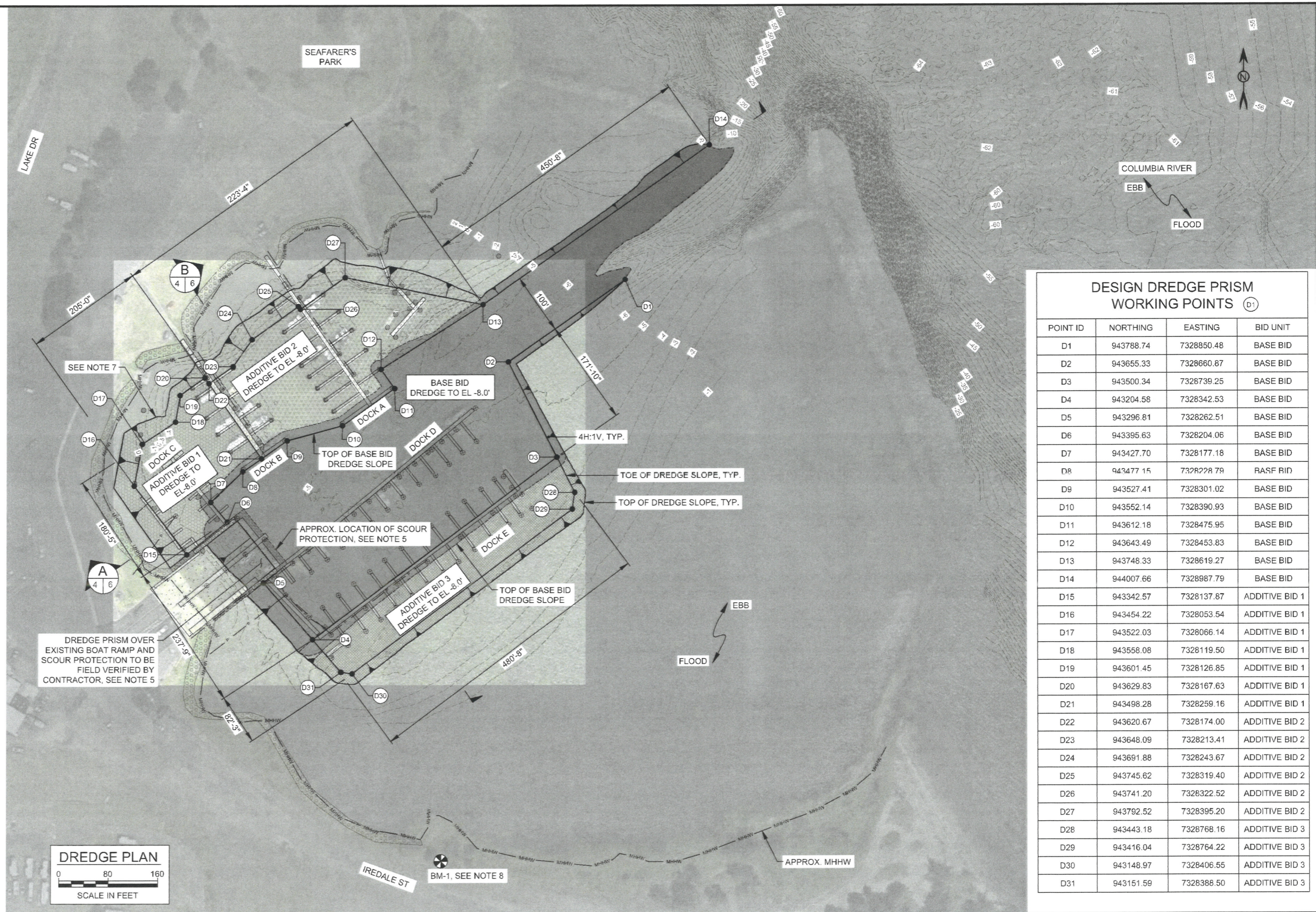


Rev	Date	Drawn	Description	Ch'kd	App'd
0	7/16/19	TM	FOR BID	GC	AP

Project Number	391895	Expires	7/17/19	B/O	4	Total	7
----------------	--------	---------	---------	-----	---	-------	---

Designed	G. Clunies	Eng check	
Drawn	T. Morrison	Coordination	
Dwg check	A. Porter	Approved	
Scale at ANSI D	As Noted	Status	
Drawing Number		Rev	
		Security	

Title
City of Warrenton
Hammond Boat Basin
Maintenance Dredging
DREDGE PRISM PLAN



DESIGN DREDGE PRISM WORKING POINTS (D1)			
POINT ID	NORTHING	EASTING	BID UNIT
D1	943788.74	7328850.48	BASE BID
D2	943655.33	7328660.87	BASE BID
D3	943500.34	7328739.25	BASE BID
D4	943204.58	7328342.53	BASE BID
D5	943296.81	7328262.51	BASE BID
D6	943395.63	7328204.06	BASE BID
D7	943427.70	7328177.18	BASE BID
D8	943477.15	7328228.79	BASE BID
D9	943527.41	7328301.02	BASE BID
D10	943552.14	7328390.93	BASE BID
D11	943612.18	7328475.95	BASE BID
D12	943643.49	7328453.83	BASE BID
D13	943748.33	7328619.27	BASE BID
D14	944007.66	7328987.79	BASE BID
D15	943342.57	7328137.87	ADDITIVE BID 1
D16	943454.22	7328053.54	ADDITIVE BID 1
D17	943522.03	7328066.14	ADDITIVE BID 1
D18	943558.08	7328119.50	ADDITIVE BID 1
D19	943601.45	7328126.85	ADDITIVE BID 1
D20	943629.83	7328167.63	ADDITIVE BID 1
D21	943498.28	7328259.16	ADDITIVE BID 1
D22	943620.67	7328174.00	ADDITIVE BID 2
D23	943648.09	7328213.41	ADDITIVE BID 2
D24	943691.88	7328243.67	ADDITIVE BID 2
D25	943745.62	7328319.40	ADDITIVE BID 2
D26	943741.20	7328322.52	ADDITIVE BID 2
D27	943792.52	7328395.20	ADDITIVE BID 2
D28	943443.18	7328768.16	ADDITIVE BID 3
D29	943416.04	7328764.22	ADDITIVE BID 3
D30	943148.97	7328406.55	ADDITIVE BID 3
D31	943151.59	7328388.50	ADDITIVE BID 3

--- EXISTING BATHYMETRIC CONTOUR
 --- DREDGE AREA OUTLINE
 --- DISPOSAL SITE
 --- USACE ENTRANCE CHANNEL PROJECT
 --- MHHW --- MEAN HIGHER HIGH WATER (APPROX.)
 HYDRAULIC PIPELINE
 ⊙ STEEL PILES
 ⊙ TIMBER PILES

1. DISPERSIVE IN-WATER PLACEMENT OF DREDGED MATERIAL VIA SUBMERGED HYDRAULIC PIPELINE SHALL OCCUR AT A MINIMUM DEPTH OF 6' BELOW THE WATER SURFACE DURING OPERATION.
2. HYDRAULIC PIPELINE MAY BE SUBMERGED FOR SPECIFIC SEGMENTS IF NEEDED FOR VESSEL NAVIGATION.

POINT ID	NORTHING	EASTING
WP1	944435.90	7329325.32
WP2	944544.41	7329730.28
WP3	943955.19	7329888.16
WP4	943820.61	7329385.88
WP5	944248.69	7329272.13

POINT ID	NORTHING	EASTING
WP1	944435.90	7329325.32
WP2	944544.41	7329730.28
WP3	943955.19	7329888.16
WP4	943820.61	7329385.88
WP5	944248.69	7329272.13

MEAN HIGHER HIGH WATER	7.64 FT
MEAN LOWER LOW WATER	0.00 FT



T +1 (425) 778 6243
F +1 (425) 778 6883
W www.mottmacamericas.com

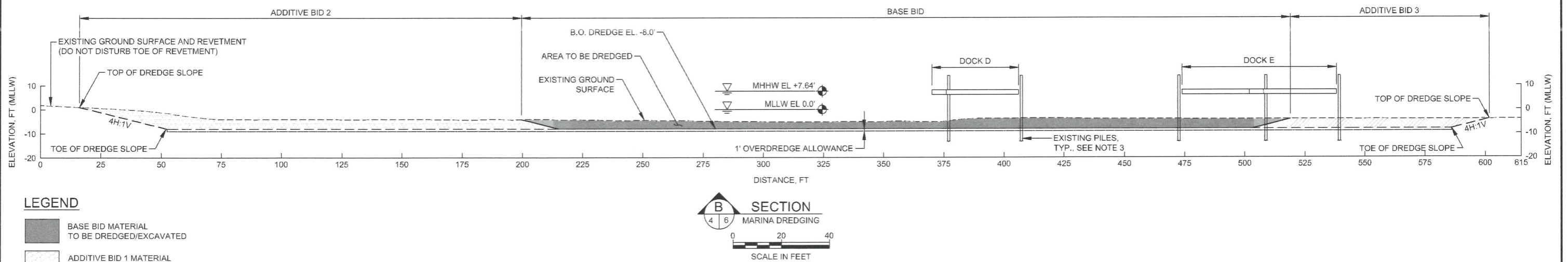


0	7/16/19	TM	FOR BID					GC	AP
Rev	Date	Drawn	Description					Ch'k'd	App'l

Project Number	EXPIRES	B/O	Total
391895	5	7	

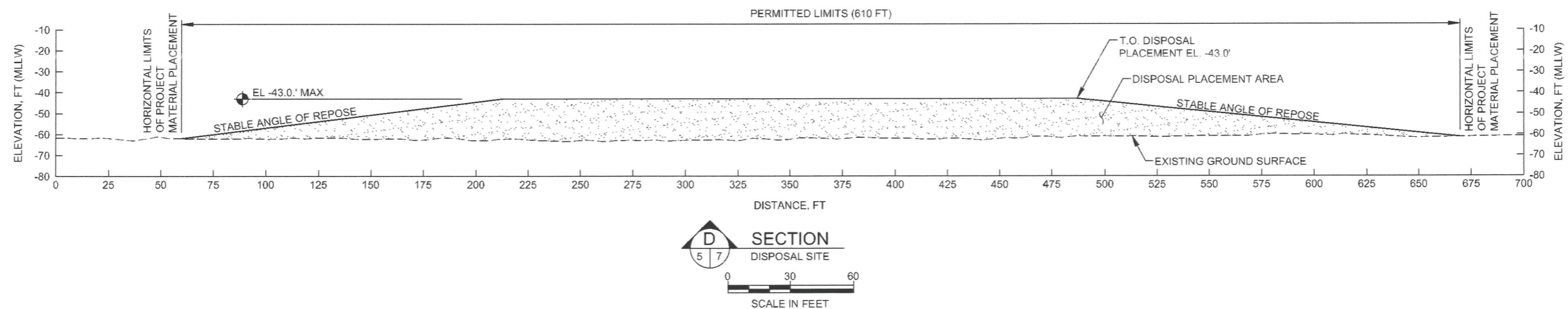
Designed	G. Clunies		Eng check		
Drawn	T. Morrison		Coordination		
Dwg check	A. Porter		Approved		
Scale at ANSI D	Status		Rev		Security
As Noted					
Drawing Number					

Title	City of Warrenton Hammond Boat Basin Maintenance Dredging
	IN-WATER DISPOSAL SITE PLAN



1. IT IS THE CONTRACTOR'S RESPONSIBILITY TO ACCURATELY LOCATE AND SIZE EXISTING IN-WATER STRUCTURES.
2. DOCK ELEVATIONS VARY WITH WATER LEVELS.
3. PILE TIP ELEVATION NOT KNOWN.

Title	City of Warrenton Hammond Boat Basin Maintenance Dredging
	SECTIONS 1

[illegible]