

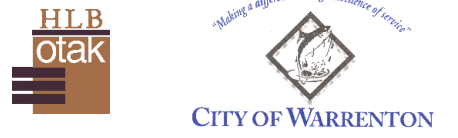
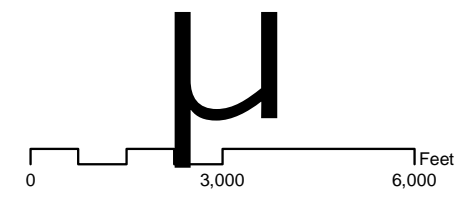
Stormwater Management Plan - City of Warrenton



Disclaimer: This data is not to survey accuracy and is meant for planning purposes only.

Source: Data for this map was obtained from Clatsop County GIS, City of Warrenton, HLB, Otak GIS and Google Earth.

- Legend**
- Highway
 - Street
 - Stream
 - Dike
 - City Limits
 - Urban Growth Boundary
 - Fort Stevens State Park

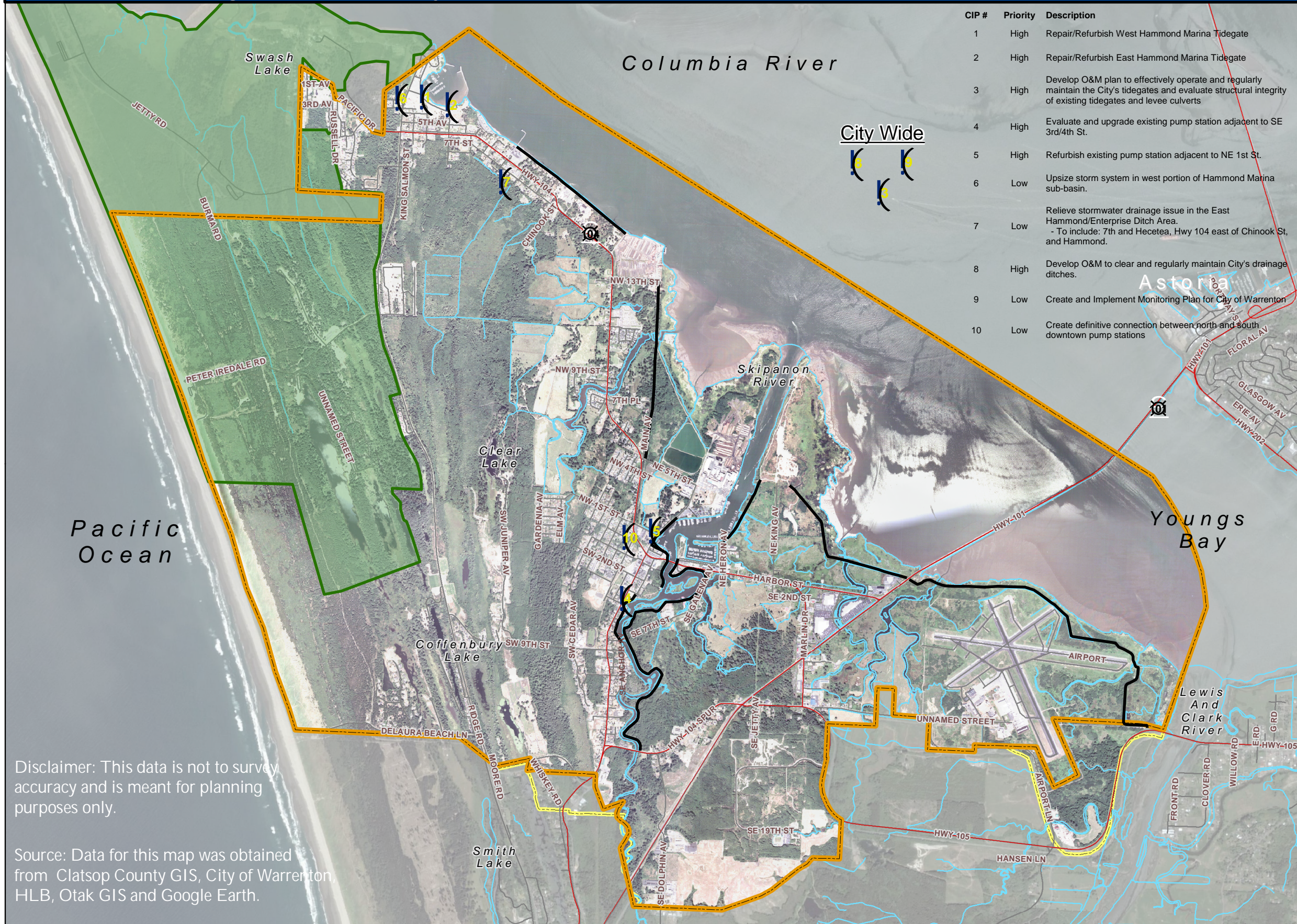


Study Area Map

Figure 1.

February 21, 2008

Stormwater Management Plan - City of Warrenton

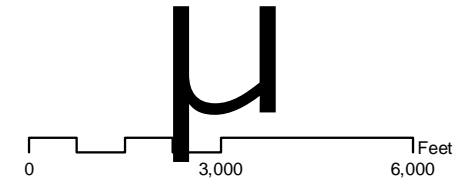


CIP #	Priority	Description
1	High	Repair/Refurbish West Hammond Marina Tidegate
2	High	Repair/Refurbish East Hammond Marina Tidegate
3	High	Develop O&M plan to effectively operate and regularly maintain the City's tidegates and evaluate structural integrity of existing tidegates and levee culverts
4	High	Evaluate and upgrade existing pump station adjacent to SE 3rd/4th St.
5	High	Refurbish existing pump station adjacent to NE 1st St.
6	Low	Upsize storm system in west portion of Hammond Marina sub-basin.
7	Low	Relieve stormwater drainage issue in the East Hammond/Enterprise Ditch Area. - To include: 7th and Hecetea, Hwy 104 east of Chinook St, and Hammond.
8	High	Develop O&M to clear and regularly maintain City's drainage ditches.
9	Low	Create and Implement Monitoring Plan for City of Warrenton
10	Low	Create definitive connection between north and south downtown pump stations

City Wide

Legend

- Highway
- Street
- Waterway
- Dike
- City Limits
- Urban Growth Boundary
- Fort Stevens State Park
- Pump Station
- Tidegate
- CIP Location and Number



Disclaimer: This data is not to survey accuracy and is meant for planning purposes only.

Source: Data for this map was obtained from Clatsop County GIS, City of Warrenton, HLB, Otak GIS and Google Earth.



Capital Improvement Projects Figure 2.
February 21, 2008

Stormwater Management Plan - City of Warrenton



Disclaimer: This data is not to survey accuracy and is meant for planning purposes only.

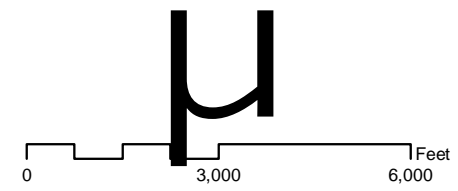
Source: Data for this map was obtained from Clatsop County GIS, City of Warrenton, HLB, Otak GIS and Google Earth.

Legend

- Highway
- Street
- Stream
- Dike
- City Limits
- Urban Growth Boundary
- Fort Stevens State Park
- % Pump Stations
- ▲ Tide Gate

Flood Zones

- A - Area Within 100-yr Floodplain
- D - Undetermined, Possible Flood Hazard
- X - Area of minimal flooding (No Hatch)
- X500 - Area between 100-yr and 500-yr Flood



Flood Hazard Map

Figure 3.

February 21, 2008

Stormwater Management Plan - City of Warrenton

