

Stormwater Management Plan - City of Warrenton



Legend

- ★ Tide Gate
- ▭ Warrenton City Limits

Wetlands

- ▨ Locally Significant Wetlands
- ▨ non-Locally Significant Wetlands

Existing Conveyance

- Curb
- Ditch
- Pipe
- //// Existing Facility Modification

New Facilities

- Ditch
- Pipe

North arrow and scale bar (0, 200, 400 Feet).

HLB otak logo and City of Warrenton logo with tagline "Making a difference through excellence of service".

Disclaimer: This data is not to survey accuracy and is meant for planning purposes only.

Source: Data for this map was obtained from Clatsop County GIS, City of Warrenton, HLB-Otak, and Otak GIS.

CIP 2 - Refurbish East Hammond Tide Gate

Figure 12.
February 21, 2008

Stormwater Management Plan - City of Warrenton



Legend

- ★ TideGate
- ▭ Warrenton City Limits

Wetlands

- ▨ Locally Significant Wetlands
- ▨ non-Locally Significant Wetlands

Existing Conveyance

- Open Channel
- Ditch
- Pipe
- ▨ Existing Facility Modification

New Facilities

- Ditch
- Pipe

Potential Location for new Pump Station and associated Plumbing

Refurbish Tidegate

Upsize Pipe from 12" to 18"

Construct new Ditch and Culvert System along Hwy 104 east of Brailer Ditch

Disclaimer: This data is not to survey accuracy and is meant for planning purposes only.

Source: Data for this map was obtained from Clatsop County GIS, City of Warrenton, HLB-Otak, and Otak GIS.

CIP 7 - East Hammond / Enterprise Sub-basin Drainage Improvements

Figure 13.
February 21, 2008

Stormwater Management Plan - City of Warrenton



Legend

- Tide Gate
- Warrenton City Limits

Wetlands

- Locally Significant Wetlands
- non-Locally Significant Wetlands

Existing Conveyance

- Open Channel
- Ditch
- Pipe
- Existing Facility Modification

New Facilities

- Ditch
- Pipe
- New Pump Station

HLB Otak

CITY OF WARRENTON

CIP 4 - Refurbish SE 3rd Pump Station

Figure 14.
February 21, 2008

Disclaimer: This data is not a survey accuracy and is meant for planning purposes only.

Source: Data for this map was obtained from Clatsop County GIS, City of Warrenton, HLB-Otak, and Otak GIS.

Stormwater Management Plan - City of Warrenton



Legend

- Tide Gate
- Warrenton City Limits

Wetlands

- Locally Significant Wetlands
- non-Locally Significant Wetlands

Existing Conveyance

- Open Channel
- Ditch
- Pipe
- Existing Facility Modification

New Facilities

- Ditch
- Pipe
- New Pump Station

HLB otak

Making a difference through excellence of service

CITY OF WARRENTON

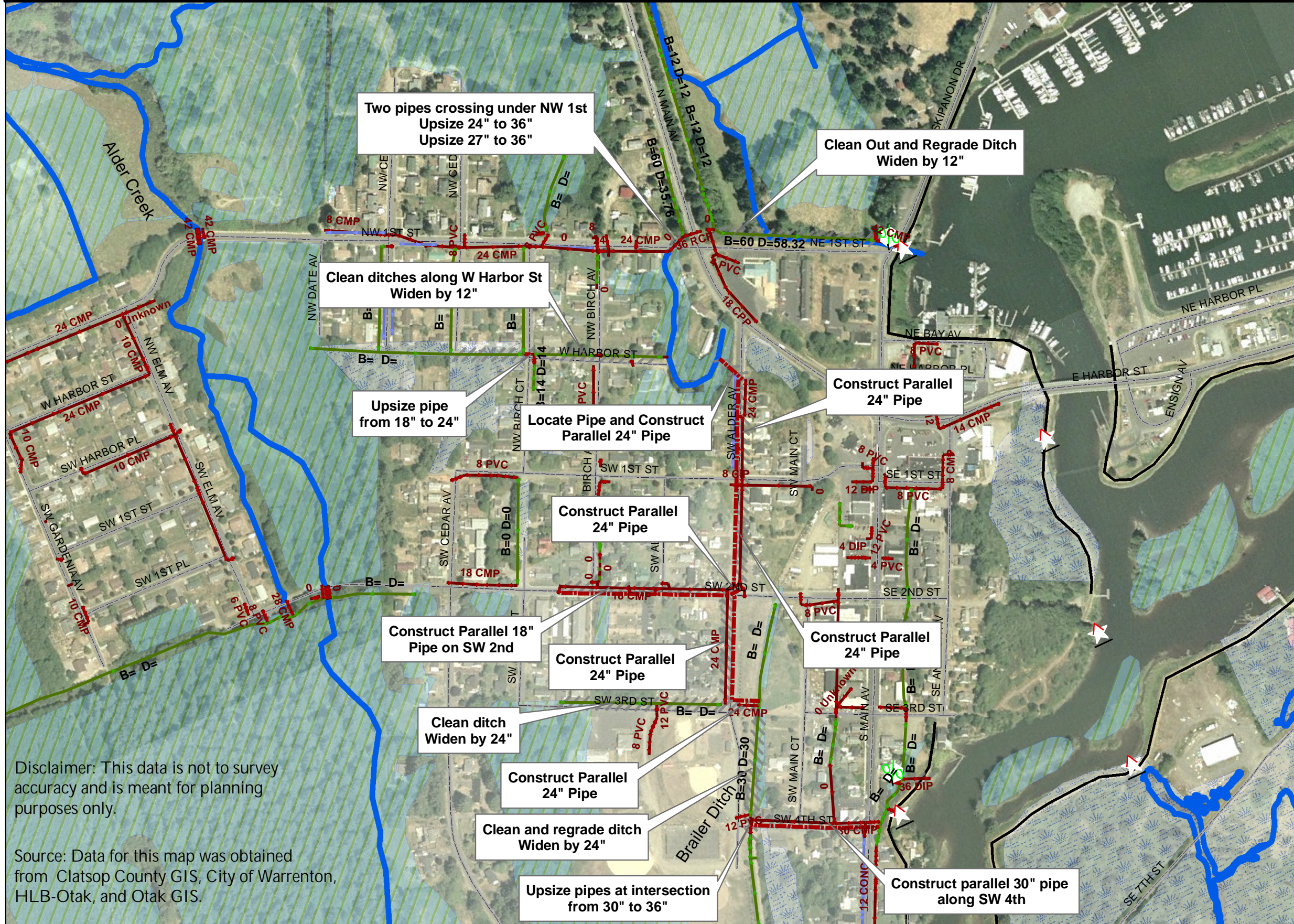
CIP 5 - Refurbish NE 1st Pump Station

Figure 15.
February 21, 2008

Disclaimer: This data is not to survey accuracy and is meant for planning purposes only.

Source: Data for this map was obtained from Clatsop County GIS, City of Warrenton, HLB-Otak, and Otak GIS.

Stormwater Management Plan - City of Warrenton



Disclaimer: This data is not to survey accuracy and is meant for planning purposes only.

Source: Data for this map was obtained from Clatsop County GIS, City of Warrenton, HLB-Otak, and Otak GIS.

Legend

- Tide Gate
- Warrenton City Limits

Wetlands

- Locally Significant Wetlands
- non-Locally Significant Wetlands

Existing Conveyance

- Open Channel
- Ditch
- Pipe
- Existing Facility Modification

New Facilities

- Ditch
- Pipe

0 400 800 Feet

CIP 10 - Downtown Conveyance System Improvements

Figure 16.
February 21, 2008