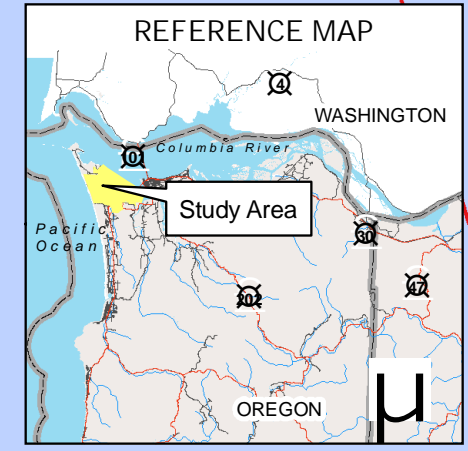
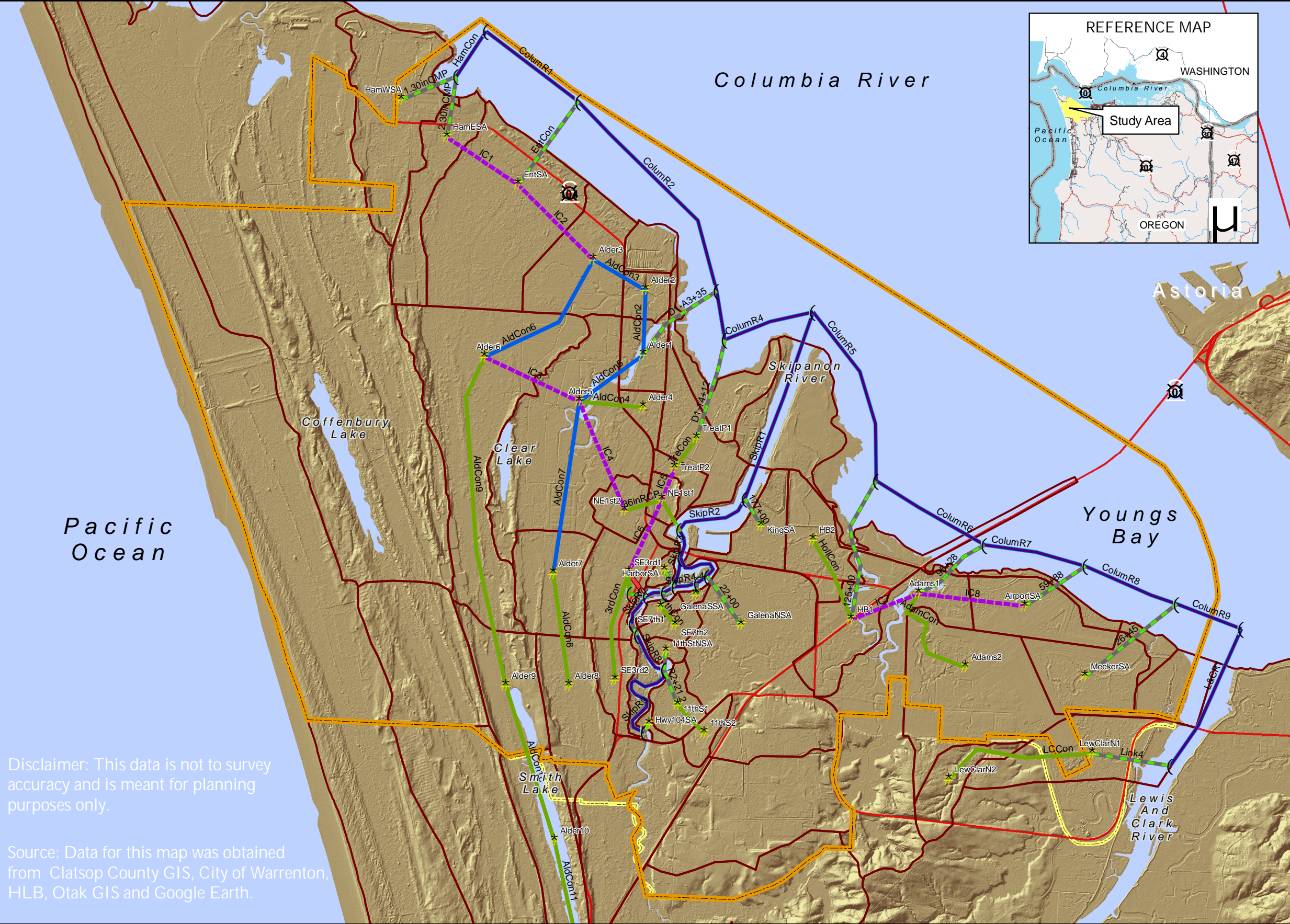
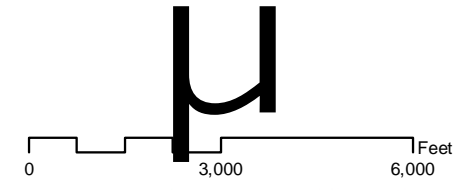


Stormwater Management Plan - City of Warrenton



- ### Legend
- Nodes**
- Type
- (Route
 - * Storage
- Links**
- Type
- Alder Creek
 - River Sections
 - - - Interbasin
 - Intrabasin
 - Tidegate
 - Pump Station
 - Basin Boundaries
 - - - Warrenton City Limits
 - Highway



XP-SWMM Schematic

Figure 9.

February 21, 2008

Disclaimer: This data is not to survey accuracy and is meant for planning purposes only.

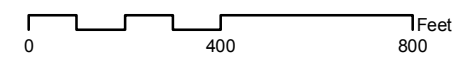
Source: Data for this map was obtained from Clatsop County GIS, City of Warrenton, HLB, Otak GIS and Google Earth.

Stormwater Management Plan - City of Warrenton



Legend

- Drainage Sub-basin Boundary
- Waterway
- Dike
- ⬠ Pump Stations
- ★ Tidegate
- Catch Basin
- Conduits**
- ➔ Curb
- ➔ Ditch
- ➔ Pipe
- Contours**
- 2 ft Contours
- 10 ft Contours
- Wetlands**
- Significant (LSW)
- Non-significant



Existing Conveyance System
Downtown Area

Figure 10a.

February 21, 2008

Disclaimer: This data is not to survey accuracy and is meant for planning purposes only.

Source: Data for this map was obtained from Clatsop County GIS, City of Warrenton, HLB, Otak GIS and Google Earth.

Stormwater Management Plan - City of Warrenton



Legend

- Drainage Sub-basin Boundaries
- Waterway
- Dike
- % Pump Stations
- ^ Tidegate
- Catch Basin

Conduits


- Curb
- Ditch
- Pipe

Contours

- 2 ft Contours
- 10 ft Contours

Wetlands


- Significant (LSW)
- Non-significant

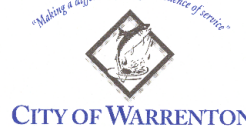


0 600 1,200 Feet

Disclaimer: This data is not to survey accuracy and is meant for planning purposes only.

Source: Data for this map was obtained from Clatsop County GIS, City of Warrenton, HLB, Otak GIS and Google Earth.



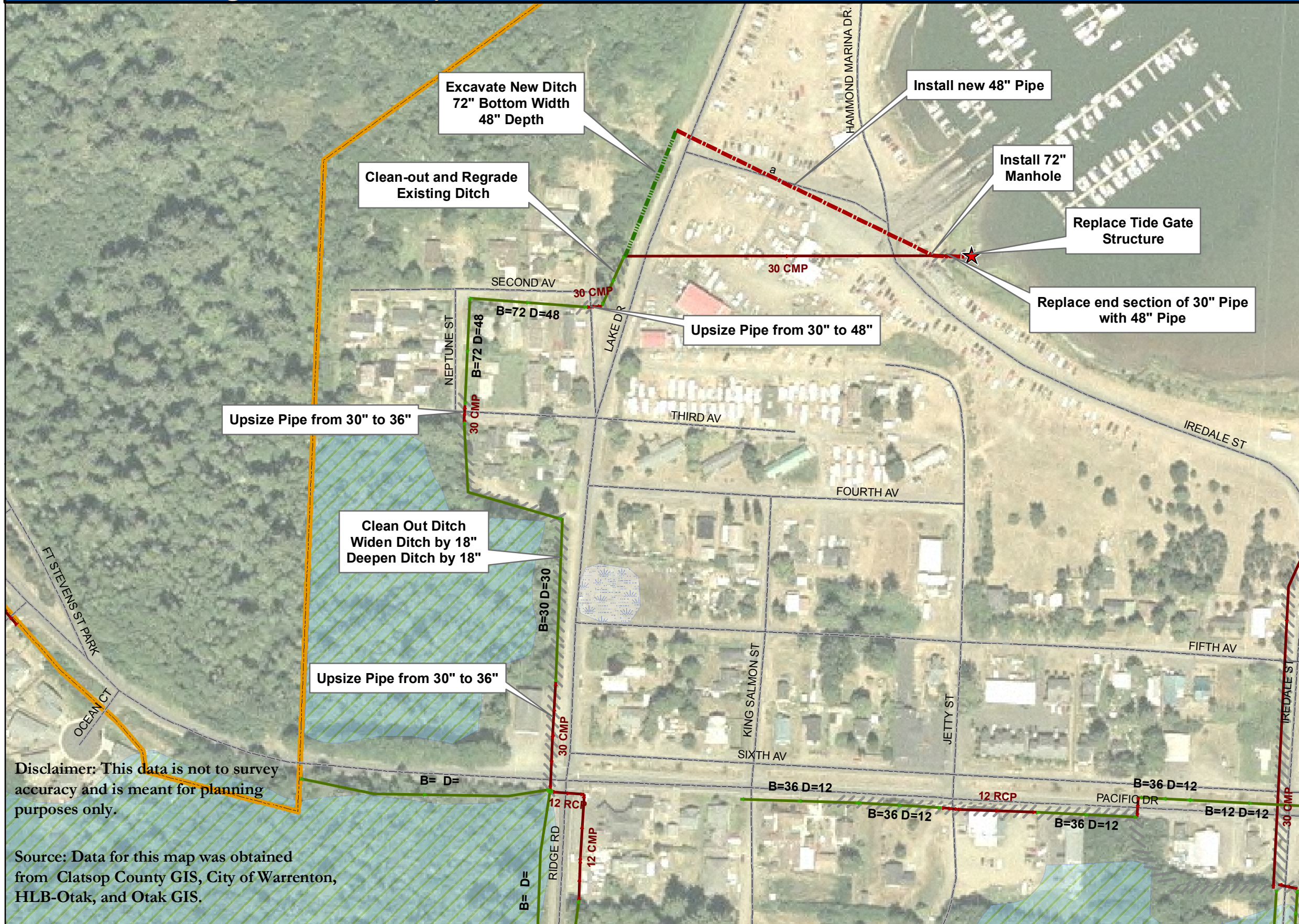


CITY OF WARRENTON

**Existing Conveyance System
Hammond Area**

Figure 10b.
February 21, 2008

Stormwater Management Plan - City of Warrenton



Legend

- ★ Tide Gate
- ▭ Warrenton City Limits

Wetlands

- ▨ Locally Significant Wetlands
- ▨ non-Locally Significant Wetlands

Existing Conveyance

- Curb
- Ditch
- Pipe
- //// Existing Facility Modification

New Facilities

- Ditch
- Pipe

0 200 400 Feet

HLB otak
CITY OF WARRENTON
"Making a difference through excellence of service"

Disclaimer: This data is not to survey accuracy and is meant for planning purposes only.

Source: Data for this map was obtained from Clatsop County GIS, City of Warrenton, HLB-Otak, and Otak GIS.

CIP 1 - Refurbish West Hammond Tide Gate

CIP 6 - Upsize West Hammond Storm Conveyance System

Figure 11.
February 21, 2008